



IMPACT ASSESSMENT

in the age of
artificial intelligence

44th Annual Conference of the
International Association for Impact Assessment

1-4 MAY 2025

Bologna Congressi (Bologna Congress Center)
Bologna, Italy

PRELIMINARY PROGRAM

ABSTRACT DEADLINE: 31 OCTOBER 2024

Why attend IAIA25?

Table of contents

- Invitation to attend3
- Conference theme4
- Abstract submission5
- Technical program6
- Conference overview8
- Sponsored meetings & networking ...10
- Training courses11
- Technical visits18
- Financial aid opportunities21
- Sponsors & exhibitors22
- Section activities23
- Conference information24
- General information.....25
- Committees / About IAIA26
- Registration27

IAIA25 is an in-person conference.

Live or recorded virtual participation is not available for this event.

Why should I attend IAIA25 in Bologna?

What % of IAIA24 delegates would recommend future IAIA conferences to colleagues?



Our delegates tell us it is because they can

- **Learn best practices** from other countries that they can apply in their own situations.
- **Network** with people who work in similar situations around the world.
- **Share experiences** with an international audience.

Where else can you gather to hear perspectives in impact assessment from around the world—all in one place? Be prepared for some out-of-the-box thinking, applying solutions developed across the world to your little corner of it.

How will I benefit?

Come to Bologna to:

- Connect with people—at the conference AND afterward
- Get new information and techniques to use at work
- Help your colleagues and stakeholders



What IAIA24 delegates told us:

- 94%** met at least one person they planned to contact after the event for work-related purposes
- 90%** acquired significant new information, knowledge, and/or techniques applicable to their work
- 97%** shared information obtained at IAIA24 with colleagues and/or stakeholders

Will it be worth it?

What sets IAIA conferences apart from other conferences? You will find:

- **International diversity** of participants
- **Mix of sectors:** academics, consultants, industry, donors, and government
- **Inter-disciplinary** representation of various fields like health, social, environment, etc.
- **Access to experts** in the field of impact assessment

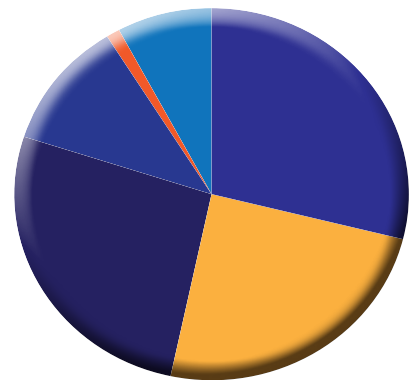
Be part of the only international interdisciplinary conference dedicated to the art and science of impact assessment...*the only one.*

Who will be there?

One of the strengths of IAIA conferences is its diversity of participants.

For more details on who attends IAIA conferences, visit <https://2025.iaia.org/who-attends-iaia-conferences>.

- CSO/NGO 7%
- Other 1%
- Industry 10%
- Education/Research 24%
- Government 22%
- Consultants 26%



Justify your attendance

Seeking approval to attend IAIA25? Check out the justification toolkit at <https://2025.iaia.org/justify-your-attendance> for help selling your participation to your employer. Resources include a sample attendance justification letter and cost worksheet.



Alan Ehrlich
President, IAIA
Mackenzie Valley Environmental Impact Review Board
Canada

It is my pleasure to invite you to IAIA25— the world's foremost conference in Impact Assessment. This year, the conference theme deals with the intersection of cutting-edge impact assessment and the cutting-edge technology of artificial intelligence. In a world where information often seems so much more abundant than wisdom, how can artificial intelligence help us make better development decisions? How should it? What new risks and opportunities does it present? Please come and join your fellow impact assessment professionals from around the world, to learn from and share ideas with leaders in our field. Together, we can chart a practical and moral vision for how impact assessment could best harness the revolutionary technological powers unfolding now before us.

For those of you with broader interests, rest assured that there will also be many sessions focusing on other aspects of impact assessment, such as social impact assessment, biodiversity and ecology, climate change, Indigenous peoples and public participation. This conference truly offers something for everyone.

We are thrilled to hold IAIA25 in the magnificent city of Bologna, Italy! Its stunning medieval architecture has made it a UNESCO World Heritage site, and its culinary heritage is also renowned for some of the most delicious food in Italy. Bologna will be an inspiring backdrop for learning, collaborating with fellow impact assessment practitioners and scholars, and nurturing innovation in impact assessment thinking and practice.

I hope to see you at IAIA25!



Giuseppe Magro
IAIA25 Conference Chair
Algebra srl, Italy

We are proud to organize this historical conference: The Impact Assessment of Artificial Intelligence will be the mainstream for many years to come and IAIA25 wants to create a global, comprehensive, and cooperative dialogue on the strategic role of IA into the upcoming AI-based society.

IAIA is in the forefront of an extraordinary challenge: our scientific and institutional community is directly impacted by this revolution, and we have the opportunity to manage this disruptive innovation and the responsibility to support public and private decision makers to face and manage a new paradigm of governance and society. In this uncertain and complex international context, UE Taxonomy is drawing a sustainable path for the financial sector trying to reduce greenwashing; therefore, AI could be an effective opportunity to create a new interdisciplinary and data-driven approach to solve the issue, simplifying bureaucracy and enforcing permitting systems.

IAIA will preview in Bologna the new AI principles for impact assessment; their aim is to support practitioners and governments in putting the well-being of people and the planet at the center of AI application objectives, improving their own strategy by monitoring the risks, and exploiting the real opportunities for humanity.



Roberta Vicentini Magro
IAIA25 Conference Co-chair
Algebra srl, Italy

We are pleased to invite you to Bologna. This event represents a unique opportunity to bring together experts, professionals, and decision makers from all over the world, with a common goal: uniting minds, visions, and territories to build the future of global sustainability together.

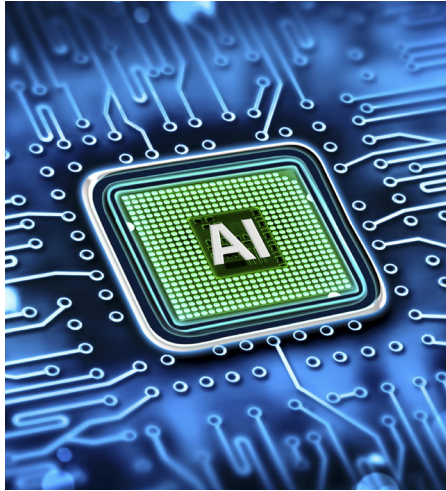
The conference will be the place where we can strengthen our ties, share ideas, and develop concrete solutions to address the environmental challenges that lie ahead. Through dialogue and cooperation, we will transform our visions into collective action, placing sustainability at the heart of our communities.

We hope that this great event is the beginning of a journey in which each of us will be able to return to our own countries with a new idea of sustainability.

And we hope that once we return home we can continue to work together, keeping the spirit of collaboration alive and building networks that will have a lasting impact on the sustainable future of our communities.

We are waiting for you in Bologna to start this important journey together!

Impact Assessment in the Age of Artificial Intelligence



But what if I don't want to talk about AI?

The program offers **50+ open sessions on general impact assessment topics**: biodiversity, climate change, cultural heritage, health, Indigenous peoples, social impact assessment, and more!

THEME

Artificial intelligence (AI) will impact every aspect of our lives, our careers, and our environment. It is difficult to predict the effective impact of this new disruptive technology on impact assessment (IA). We are facing the opportunity of using the extraordinary potential of artificial intelligence to support our assessments and our choices.

Like any paradigm innovation capable of impacting every aspect of society, artificial intelligence requires that institutions, IA practitioners, and all stakeholders understand its importance and explore, detect, and contribute to mitigate its effective and pervasive impact on environment.

IAIA25 will create a global, comprehensive, and cooperative dialogue on the strategic role of impact assessment and impact assessment practitioners in the coming AI-based society, stimulating IAIA members and others to share their experiences and suggestions for supporting players with innovative and creative approaches and tools.

OBJECTIVES

- Open a multi-disciplinary discussion on advantages and risks of AI for IA
- Suggest the use of data-driven approaches into ordinary IA practices
- Enhance the knowledge of AI tools for impact assessment
- Share the potential of AI for effective ESG assessment/disclosure/reporting

CONFERENCE TOPICS

The conference will focus on these thematic streams::

- Impact of artificial intelligence on impact assessment
- Data-driven innovation of processes/approaches/methodologies/tools
- Evidence-based policymaking
- Environmental, social, and governance (ESG)
- General IA topics
- IAIA special-interest Sections

ABOUT SESSIONS

A session is a 90-minute block of time during which discussion centers on a particular topic. Sessions may utilize a variety of formats, and the length of time available for presentations or speakers depends on the format that has been selected by the session chair. Session formats include:

Game-Gaming (G): Plan and play a strategy game where players have to navigate real-life policies and goals affecting impact assessment professionals. This activity-based session format is highly interactive and encourages communication, networking, and team building.

Panel discussion (PD): Each speaker gives a brief (5 minutes) prepared presentation, usually presenting a different view or experience on the topic, followed by discussion between the speakers and then questions from the audience facilitated by the chair.

Paper session (PS): In a paper session, authors orally present the findings of a prepared paper or project. A paper session typically allows 4-5 presentations of 15-20 minutes each, including time for audience questions. Ideally, the chair allocates time for general questions and open discussion following the presentations.

Pecha Kucha (PK): Pecha Kucha is a presentation methodology in which 20 slides are shown for 20 seconds each (six minutes and 40 seconds in total). This format allows for concise and fast presentations with more than typical discussion time following the presentation.

Solution room (S): Designed to provide peer-supported advice on individuals' most pressing problems, each speaker presents a challenge they are facing. Participants then divide into small groups of 8-10 individuals. Each speaker presents their problem to a small group and has it brainstormed by the group in 7-minute cycles. At the end of a cycle, the participants move on to the next table and the speaker talks to a different group. Groups share tables with paper that they can write on to gather solutions to the problems.

Theme forum (TF): Smaller than plenaries and larger than concurrent sessions, theme forums include "cut-above" presentations and discussions which are cross-cutting issues relevant to the many specialties of impact assessment; bring together on a particular topic the various aspects of impact assessment and examine how those aspects apply to different sectors and issues; engage with the conference theme; be relevant to our international audience; and be innovative in format. The number of theme forums is limited, and because selection is competitive, additional criteria applies to final selection and identification of theme forums listed in the final program.

Workshop (W): In a workshop, the topic is very specific and usually seeks to resolve a defined problem, often through a combination of 2-3 short paper presentations and active discussion.

World Café (WC): The World Café format is a simple, effective, and flexible format for hosting large group dialogue. The process begins with the first of two or more rounds of discussion for groups of 8-10 seated around a table. Each round is prefaced with a question. At the end of each 15-20-minute round, each member of the group moves to a different table. They may or may not choose to leave one person as the "table host" for the next round, who welcomes the next group and briefly fills them in on what happened in the previous round. Once all rounds have been completed, key points from each table are presented to the whole group for a final collective discussion.

Abstract submission

ABSTRACT SUBMISSION DEADLINE

31 OCTOBER 2024

PRESENTING AUTHOR REGISTRATION DEADLINE

22 JANUARY 2025

LANGUAGE

ENGLISH

SUBMITTING PAPER AND POSTER ABSTRACTS

PAPERS

- Read the session descriptions (<https://2025.iaia.org/pages/sessions.php>) and decide which session best fits your paper. Note that you may contribute only to sessions identified as "Open" unless you have been invited by a session chair to an "Invitation Only" session. If you have been invited to an "Invitation Only" session, the chair will contact you with instructions.
- Read the submissions guidelines and policies (<https://2025.iaia.org/guidelines-and-policies-for-presenting-authors/>). Check the box at the bottom of the page and then complete the submission form.

POSTERS

- Read the submissions guidelines and policies (<https://2025.iaia.org/guidelines-and-policies-for-presenting-authors/>). Check the box at the bottom of the page and proceed to the submission form. At the top of the submission form, click "I want to submit a poster abstract." and then complete the poster form.

ABOUT POSTERS

Posters are a creative and popular alternative to the oral presentation of a paper. In a poster session, there is no formal oral presentation; instead, each author is assigned a display area on which diagrams, graphics, data, pictures/photos, and a small amount of text are presented. The poster should be self-explanatory, but the author should be available at certain times, such as refreshment breaks and during the dedicated poster session, to interact with viewers and answer questions.

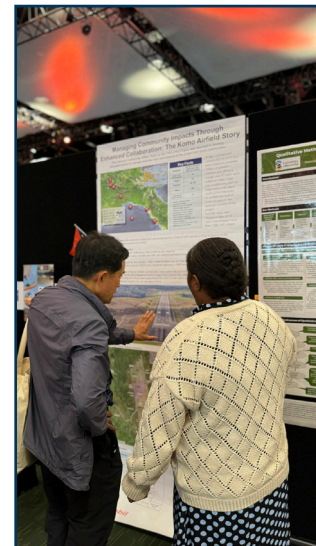
Guidelines for poster presenters

Each poster presenter is assigned one space on a flat, upright panel. Presenters are required to use the panels provided by IAIA and to provide the materials to put their posters in place.

Advertising is not permitted.

Posters will be on display from 1-4 May.

Additional poster preparation information is available on the IAIA25 web site (<https://2025.iaia.org/say-it-with-a-poster/>).



Sessions

ABOUT THE TECHNICAL PROGRAM

The technical program is structured into two streams: (1) thematic sessions focusing on “Impact Assessment in the Age of Artificial Intelligence” and (2) general impact assessment sessions, including topics that address issues of interest to IAIA’s special-interest Sections. Up to 15 “theme forums” will be offered throughout the conference. Theme forums focus on cross-cutting issues relevant to the many specialties of impact assessment with topics that engage the conference theme.

The sessions listed below are open for abstract submissions through 31 October. See page 5 for instructions.

Academia research and teaching (PS)	Can AI support long-term monitoring and adaptive management? (TF-PS)	Evolving the state of the art in psycho-social impact assessment (PS)
Advancements in environmental impact assessment through digital innovations (TF-PS)	Challenges facing the IA process in developmental projects: An African perspective (PD)	Exploring AI for effective stakeholder engagement in impact assessments (PD)
AI and digital innovation in project, product, and business impact assessment (PS)	Challenges of AI for accountability and ethical practice (PD)	Exploring the use of AI to tackle the social implications of climate change (PS)
AI and remote sensing for sustainability and environmental and social risk management (PD)	Challenging implementation of cultural heritage impact assessment standards (PS)	Global perspectives on public participation: Best and worst case examples (PK)
AI and sustainability: The new era of environmental assessment (PS)	Closing the equity gap: AI opportunities and challenges in impact assessment (PD)	How can AI improve IA follow-up practice? (PS)
AI and sustainable finance (PD)	Critical habitat assessment for no net loss in linear infrastructure projects (PS)	Human rights impact assessment of digital technology (TF-WC)
AI for IA in agriculture, forestry & fisheries (PS)	Cultural heritage in EIA: Harnessing AI for preservation and progress (PS)	Human-centric AI implementation into ESIA and CSR (PS)
AI in IA: Enhancing cumulative effects assessment in the era of decarbonization and self-determination (PD)	Cultural heritage in strategic environmental assessment (PS)	IAIA and cumulative effects: A new Section and a busy future (W)
AI pros & cons: A collective perspective on a modern tool to support more meaningful assessments (PD)	Cumulative effects assessment, monitoring, and management: State-of-the-art (PS)	Identifying real-world solutions to support women in green transition energy projects (W)
Applying AI to consolidate gender-based violence data for effective risk assessment (TF-PD)	Data protection in social impact assessment (PS)	Impact assessment and governance for climate adaptation in megacities (PS)
Applying and strengthening qualitative methods for effective IA (PS)	Data-driven social risk management methods and tools for central and local use (PS)	Impact assessment of innovative climate adaptation techniques in the developing Global South (PS)
Are competent experts & capacity building still core to IA in spite of AI? (PS)	Disasters, conflict and impact assessment: What has been done? What is new? (PS)	Impact assessment of mine closure for post-mining transitions (PS)
Artificial intelligence in capacity building for impact assessment (PD)	E&S standards in “fragility conflict and violence” settings: Challenges and solutions (PD)	Implementation of HIA from a comparative perspective: Common grounds, differences, and the future with AI (PS)
Asian S3EA: Strategic, spatial and sustainable EA in AI era (PS)	Effective integration of climate change risks in impact assessment (PS)	Improving IA efficiency for climate change: Why, when, and how (PS)
Assessing the impact of emergent technologies in monitoring and measuring biodiversity at mine sites (PD)	Embracing nature: From grey solutions to nature-based solutions (W)	Improving strategic environmental assessment practice in the EU and the wider world: Can AI help? (PS)
Assessment of climate-related disasters and adaptation actions (PS)	Emerging AI applications in IA (PS)	In search of efficient EsIA and permitting including potential role of AI: Lessons learned (WC)
Blue economy, SEA and marine spatial planning (PS)	Environmental and social risk classification chess (specialists vs AI) (TF-W)	Indigenous knowledge as a driver of innovation in impact assessment (PS)
Bridging the digital divide: Enhancing EIA in low and middle-income countries (PD)	Environmental impact assessment in the AI Era: The case for AI in baselining biodiversity (TF-PS)	Integrated biodiversity assessment tool, IPLCs, and AI (W)
Can AI be an effective tool for supporting country biodiversity and forestry assessments? (PD)	Evidence-base in impact assessment: The role of spatial data and GIS-based decision-support tools (W)	Integrating climate change through the lens of IFC’s Performance Standards: Addressing environmental and social physical climate risk in infrastructure projects (PD)
Can AI project future IA baseline conditions using today’s emerging data? (PS)	Environmental and social management systems: transforming EIAs into actions (PD)	

See <https://2025.iaia.org/pages/sessions.php> for session descriptions.

Korean endeavor to accomplish digital EIA: Demonstration (PS)

Linear infrastructure project: The path of least impact with artificial intelligence tools (PS)

Mainstreaming AI in environmental baselining and monitoring (TF-PD)

Making impact assessment more DAVE (W)

Managing social and environmental impacts of AI demands (PS)

Meaningful stakeholder engagement: For and with affected stakeholders (PS)

Methods and approaches to impact assessment (PS)

More effective public participation through digital technologies (PS)

Navigating complexities: Resettlement management in zones emerging from conflict (PS)

Opportunities for early professionals integrating AI into impact assessment (PD)

Pivoting policies: Evidence-based environmental policymaking and its impact on renewable energy development (PK)

Post-resettlement livelihoods: Reality, experiences and lessons (PS)

Queering impact assessment: An invitation for intersectional dialogue (PD)

SIA as the basis for ongoing participatory community monitoring: Examples from across the world (PS)

Social acceptance in the “backyard”: Approaches and empirical evidence (PS)

State-of-the-art applications of AI for impact assessment: Lessons learned (TF-PS)

Steps and tools to improve documents and procedures to streamline IA (PS)

Synergies between impact assessment and the circular economy (PS)

Techniques for teaching EIA (PK)

The biodiversity significance of some modified habitats: Implications for impact assessment (PS)

The good, the bad and the ugly: The role of AI in public participation in IA (PS)

The validation of impact assessments, adaptive management, and reassessments (PS)

Tools and techniques for regional cumulative effects assessment and management (TF-W)

Towards improving social impact management in the mining sector (PS)

Transparency and data sharing in impact assessment for the energy transition (PS)

Us vs. the machine: Making an impact assessment more efficient, more accurate, and more substantive (PK)

User requirement for digital transformation in environmental impact assessment (PD)

Using AI technologies to quantify environmental impacts on complex systems (PS)

Using AI to leverage new technologies for biodiversity data collection (PK)

Utilizing artificial intelligence in urban environmental planning for climate change response (PS)

What science and whose art? Demarcation of AI and human roles in IA (TF-S)

What’s the reality behind the AI hype in IA? (TF-W)

INVITATION ONLY

These sessions have speakers pre-identified and specifically invited by the session chairs. They do not accept unsolicited abstract submission.

A rights-based approach to IA: Indigenous resilience and resurgence through engaging in IA (TF-PD)

AI for social risk management: Insights from World Bank and Asian Development Bank (ADB) (PD)

AI in the USA: Technology’s potential to improve the National Environmental Policy Act (NEPA) IA process (PS)

Artificial intelligence and Indigenous data in impact assessments (WC)

Assessing sweeping human rights impacts of AI and related information and communications technologies (W)

Bioregional impact assessment (W)

Can green investments be socially sustainable? (PD)

Can IA be more “future-smart”: Incorporating futures thinking in IA (TF-W)

Data-based innovation for impact assessment: Risks and scenario simulation (PS)

Essential AI learnings: ESIA tools from multilateral financial institutions (TF-W)

Essential AI learnings: Workflow management for ESIA from MFIs (TF-PD)

Handbook on health impact assessment (PD)

Harnessing AI for enhanced IA: Innovations, SDG alignment, and best practices (PD)

Indigenous holistic cumulative effects programs: Enhance your assessments (PD)

Linkages between sustainable finance and impact assessments (PD)

Navigating conservation with AI: Trustworthy data for a sustainable future (PD)

Offshore wind farms ESIA: State of the art, issues, and opportunities (PD)

Study case: AI-powered chatbot for Bakun resettlement community (PD)

The emerging role of artificial intelligence in the future of impact assessment (TF-W)

Transdisciplinary impact assessment for microelectronic industry (PS)

Unearthing the unspoken in community engagement: Sustainability, resilience, and AI (PD)

Use of data, technology, and artificial intelligence tools for enhanced accountability (WC)

What is needed to achieve trusted and efficient IA for “green” projects (PD)

CLOSED

These sessions do not accept abstracts.

Assessing the impacts of food systems: Experiences from the UN RBAs (WC)

Global perspectives on the evolution of impact assessment effectiveness (W)

Going digital, staying human: Technology and social impact assessment (W)

Help finalize best practice principles in participation, AI assisted! (S)

IAIA Climate Change Action Plan: What’s new? What’s next? (TF-WC)

Identifying potential health impacts of the use of Artificial Intelligence (W)

Linking Global Commons issues to IA: Fit for Future actions and next steps (W)

Meet the editor (W)

Standing for humanity! How to assess subtle social impacts in the era of artificial intelligence (WC)

Updating best practice principles on engaging with Indigenous communities (W)

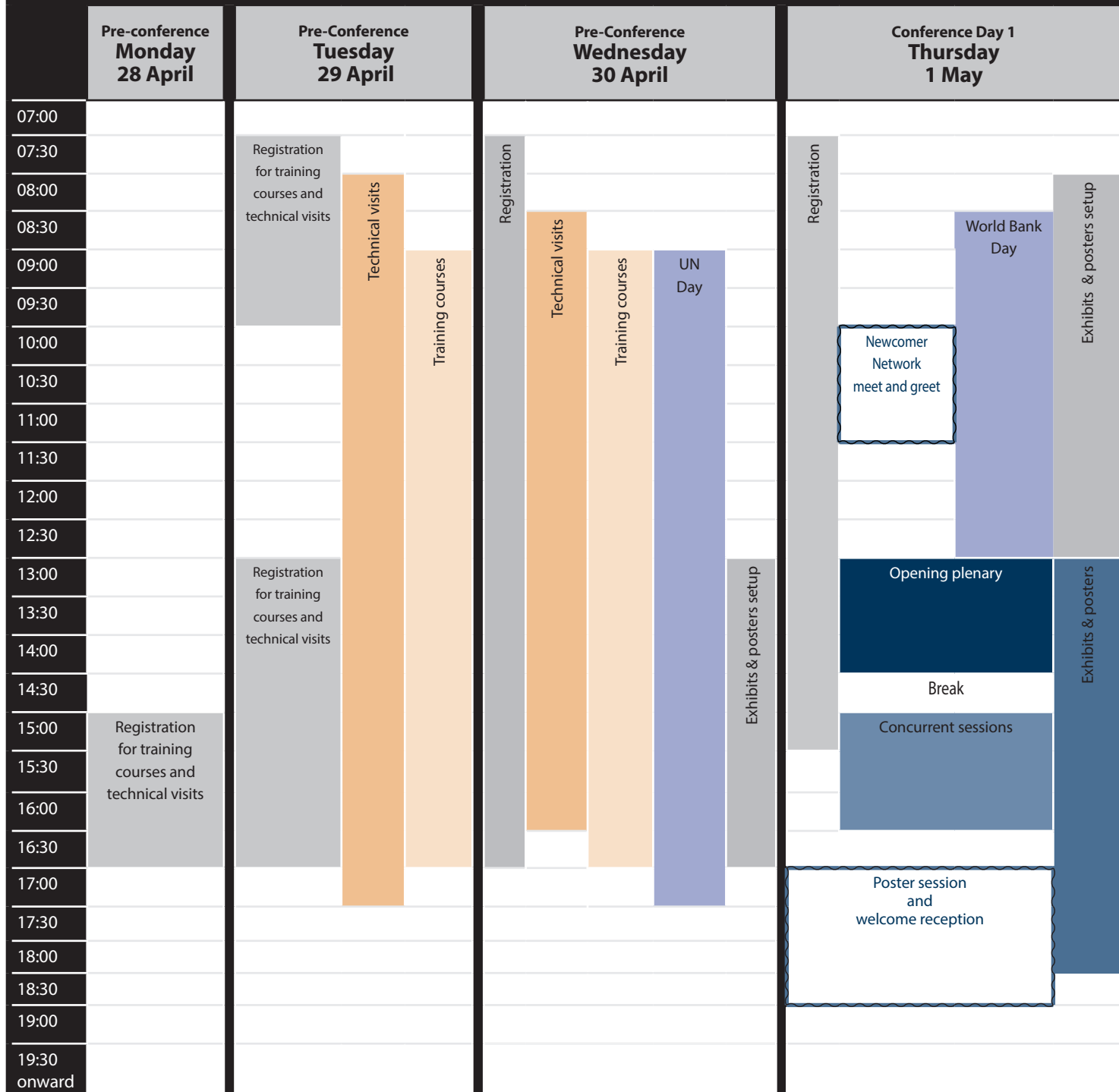
Using strategic thinking in impact assessment to enhance sustainability (G)

Conference overview

- The conference will formally begin at 13:00 on Thursday, 1 May.
- Training courses will be offered 29-30 April.
- Technical visits will be offered 29-30 April and 5-6 May.

Tentative Program Overview

Check the final program for confirmed dates, times, and events.



Conference overview

- Visit <https://2025.iaia.org/pages/sessions.php> for a full list of proposed sessions.
- The welcome reception will take place on Thursday, 1 May, and the banquet on Sunday, 4 May.

Conference Day 2 Friday 2 May		Conference Day 3 Saturday 3 May		Conference Day 4 Sunday 4 May		Post-Conference Monday Tuesday 5 -6 May	
							07:00
							07:30
							08:00
Registration	Theme forums	Registration	Theme forums	Registration	Theme forums	Technical visits	08:30
	Exhibits & posters		Exhibits & posters		Exhibits & posters		09:00
	Break		Break		Break		09:30
	Concurrent sessions		Concurrent sessions		Concurrent sessions		10:00
	Lunch and Committee meetings		Lunch and Committee meetings		Lunch and Committee meetings		10:30
	Concurrent sessions		Concurrent sessions		Concurrent sessions		11:00
	Break		Break		Break		11:30
	Concurrent sessions		Concurrent sessions		Concurrent sessions		12:00
	Section meetings		Section meetings		Closing plenary		12:30
					Exhibits & posters dismantle		13:00
							13:30
							14:00
							14:30
							15:00
						15:30	
						16:00	
						16:30	
						17:00	
						17:30	
						18:00	
						18:30	
				Banquet		19:00	
						19:30 onward	

Sponsored meetings, networking activities, and social events

UNITED NATIONS DAY: APPLICATION OF ENVIRONMENTAL AND SOCIAL STANDARDS FOR UN PROGRAMMING

This workshop provides IA practitioners with an overview of the United Nations' Common Approach to Environmental and Social Standards. Given the different programming characteristics of UNDP, FAO, IFAD, and WFP, discussions will focus on their screening procedures and requirements for compliance with their Environmental and Social Standards.

Wednesday 30 April | 09:00-17:30

Price: \$30 (includes lunch)

Pre-registration and extra fee required.

Minimum-Maximum participants: 30-80.

WORLD BANK DAY

This session provides an update on how the World Bank Group (WBG) supports its clients in environmental and social sustainability and risk management. It will cover the latest developments in E&S risk management across the WBG and provide a forum to exchange insights and lessons. This event will spotlight effective practices and key learnings, and we will discuss how to use the E&S Framework (ESF) and IFC's Performance Standards (PS) as an entry point for improved impact assessment and evidence-based policymaking. The target audience is impact assessment practitioners who interact with the World Bank in their work.

Thursday 1 May | 08:30-13:00

Price: \$50 (includes lunch)

Maximum 95 participants.

Pre-registration and extra fee required.

WELCOME/POSTER RECEPTION

Dive into the buzz of our welcome reception! Reunite with old friends, meet new faces, and set the stage for an unforgettable week ahead. This is your chance to mingle, network, and make memories that will last. And don't forget—posters will be showcased at the reception, giving you the perfect opportunity to connect with the brilliant minds behind them. Join us for an enjoyable start to your conference experience!

Thursday, 1 May | 17:00-19:00

Pre-registration required.

AWARDS

IAIA is thrilled to announce its 2025 award winners! Celebrate with us as we honor the exceptional individuals who have made outstanding contributions to the field of impact assessment and IAIA. Stay tuned for the exciting details and join us in applauding their remarkable achievements!

TAG US!

Post about IAIA25 before, during, and after the conference using **#IAIA25**.

IAIA SECTION MEETINGS: CONNECT AND ENGAGE!

Join one (or more!) of IAIA's many special-interest Section meetings at the conference (see the full list on page 23). These informal gatherings are the perfect opportunity to meet colleagues who share your professional interests, network, and get involved in activities that drive innovation and best practices in impact assessment. Whether you're interested in health, academia, technology, or any other Section topic, this is your chance to contribute to the conversation and shape the future of our field. Don't miss out on this valuable opportunity to connect!

Friday 2 May | 17:45-18:45

Saturday 3 May | 17:45 - 18:45

BANQUET

After the closing plenary, celebrate as we conclude a remarkable week of learning, networking, and growth. Join your colleagues and friends and enjoy the best of food and friendship that IAIA25 and Bologna have to offer. Experience regional food, drink, and entertainment in a relaxed atmosphere at the historic Palazzo Renzo that offers one last opportunity to network, share ideas on topics of interest, and connect with colleagues who have similar interests but whom you might not have met during formal sessions.

Sunday 4 May | 19:00 onward

Price: \$65

Pre-registration and extra fee required.

NEWCOMER NETWORK

Are you a first-timer or an IAIA conference veteran? Either way, you can benefit from participating in the Newcomer Network! The Newcomer Network offers a warm welcome to those attending our conference for the first time by introducing them to experienced attendees (and other first-timers). One or two veterans at each table will be joined by a group of first-timers in an informal setting to help "break the ice." In addition to getting to know each other, first-timers can ask questions about making the most of their conference experience as well as questions about IAIA in general. After 15 minutes, first-timers move to a different table to start again with a different group. It is also a simple and informal way for veteran attendees to open a door or two for their own social and professional interactions.

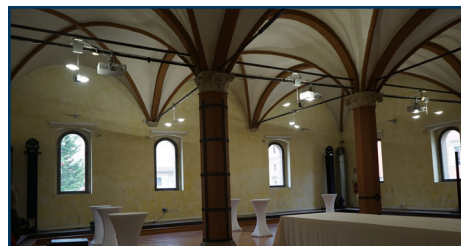
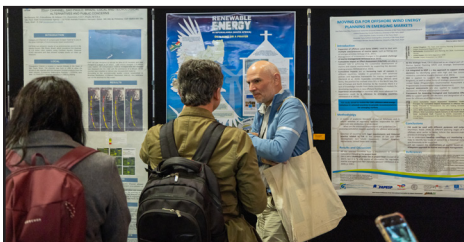
Join the meet and greet to connect with a new friend or two. IAIA staff members will also be available to answer questions.

To participate, tick the veteran or first-timer box on the registration form.

Newcomer Network meet and greet

Thursday 1 May | 10:00-11:30

Pre-registration required.



IAIA training courses will be held 29-30 April 2025 at the Bologna Congressi (Bologna Congress Center). Separate registration fees apply, and pre-registration is required.

Please register early! Courses will be cancelled if they do not reach the minimum number of paid participants by 11 March 2025.

IMPORTANT DATES:

11 March: Courses without the minimum registrants after this date are canceled.

10 April: Last date to register for or change courses

In consideration of the trainers and their need to prepare appropriate quantities of course materials, registrants may not change courses after 10 April 2025.

ABOUT TRAINING COURSES

Who can register? Training courses are open to anyone who registers and pays by 10 April 2025. If you are not also registered for the conference, you will be charged an additional US\$85 fee.

Who teaches the courses? Primarily IAIA members. All course proposals are vetted by IAIA's Training and Professional Development Committee and approved by the Board of Directors, so you can be assured these are experienced, qualified professionals.

What is the class size? Minimum/maximum class sizes are noted in each course description. If the course you choose does not reach the minimum number by 11 March, IAIA HQ will notify you and provide refund information or offer to transfer you to another course.

Where are they held? In person at the conference venue in Bologna, Italy.

How much do they cost and what is included? IAIA's two-day courses are US\$480 and include course materials, light lunches, and coffee breaks.

Can I add a training course later? If you have already registered for the conference but want to add a training course, contact info@iaia.org with your request; this cannot be done online. Any additions must be made by 10 April.

What if I need to cancel? If you must cancel, your course registration fee will be refunded minus a US\$125 administrative fee, provided you send written notification to IAIA HQ by 10 April. No refunds will be given after 10 April.

Some details for when you arrive onsite: Check-in for the training courses will be available at the IAIA registration desk in the conference venue. Name tags will be distributed at check-in and are required for admission to courses. Check-in the day before your course begins is encouraged.

STUDENT TRAINING COURSE FEE WAIVERS

A limited number of free training course registrations are available to student participants of IAIA25 when courses reach their minimum paid enrollments. For application instructions, see page 21.

1 More effective impact assessment: Tools for stronger argument and clearer writing

This course will help you reason more clearly and write more effective impact assessments. Better arguments make key decisions more transparent and help reduce risks to projects. Environmental impact assessment—like all technical writing—constantly uses reasoning to reach conclusions. That process is called “argument,” which means to assemble a series of reasons, leading to conclusions, for a specific audience.

This course shares two sets of tools collectively called Organized Reasoning. The first provides principles for creating clearer arguments that apply to phases of the IA process. The second shows how to better present arguments in written documents.

The course shows how IA documents contain common errors in their arguments and weaknesses in their writing. Participants will assemble evidence and reasoning for several different kinds of argument found in IAs. We practice steps, and demonstrate computer-based tools, that show how to bring improved arguments to technical reports. Participants learn a revised approach to planning, preparing and writing documents that they can use immediately on the job. More details at www.glennbrown.ca.

The course takes two days. There will be a half-day online follow-up session three months later. You'll receive handouts documenting the main ideas.

Level:	Intermediate
Prerequisites:	Some previous participation in preparing and writing IA documents.
Language:	English
Duration:	2 days (29-30 April)
Min/Max:	10-25
Price:	\$480
Instructor:	Glenn Brown , Adjunct Professor, Royal Roads University, School of Environment and Sustainability (Canada)

Training courses

2 Transforming ESIA into action: More effective follow-up for sustainable development

In the era of Artificial Intelligence (AI), knowing how and when to use AI data will be critical for monitoring and auditing. It is essential to collect site-level environmental and social baseline data, evaluate the associated impacts of the projects within ESIA's and ensure follow-up on recommendations. Project-level baseline data gathering and transferring these data into meaningful performance indicators requires attention *early*; i.e., during ESIA preparation to set-up post-ESIA monitoring and auditing.

The aims of this course are to improve understanding of the roles and responsibilities for environmental and social monitoring and auditing processes, including due diligence prior to investing in existing projects; explain how to set up systematic, robust systems of monitoring and compliance auditing; facilitate adaptive management; and show how companies, governments, finance institutions, etc., will use such information. Participants' learning outcomes of the course will be:

- Establish effective monitoring processes based on the ESIA to ensure adaptive management and sustainable performance outcomes.
- Ensure effective implementation of ESMPs through robust monitoring and auditing systems.
- Understand results obtained during monitoring and auditing to guide current and future projects.
- Enhance individual participants' project monitoring and auditing skills.
- Understand the purpose and value of due diligence audits.

Level: Intermediate/Advanced

Prerequisites: Participants must have knowledge of the ESIA process including the formulation of Environmental and Social Management Plans (ESMPs) and some experience with project monitoring or auditing.

Language: English

Duration: 2 days (29-30 April)

Min/Max: 10-35

Price: \$480

Instructors: **Bryony Walmsley**, Director, SAIEA (South Africa)
Defne Arisoy, Consultant, Ministry of Transport and Infrastructure (Turkiye)
Charlotte Bingham, EIA practitioner (USA)

3 Nature-based solutions for greening the linear infrastructure

Driving capital into linear infrastructure networks of road, railways and power is one of the world's greatest priorities to secure a safe future for people and wildlife. However, with fast paced developments Linear Infrastructure (LI) networks, land area available for conservation and restoration is not enough to prevent, reverse, and halt the biodiversity loss. Poorly planned linear infrastructure can induce wildlife mortality and impede movement, fragment natural habitats, deplete natural resources, and reduce benefits from ecosystem services. While policy to promote connectivity of habitat in transportation corridors is advancing, development of nature-based solutions and nature-sensitive infrastructure designs to maintain ecological connectivity have a relatively recent origin. Nature-based solutions that integrate the principles of "connectivity conservation" and "reconciliation ecology" can maximize the conservation outcomes and societal gains from new Green Infrastructures (GI) developments and mitigate those that exist and cannot be relocated.

The underlying focus of the course is to promote the positive contributions of green infrastructure by sharing nature-based solutions and addressing challenges created by the lack of awareness, technical knowledge, and ecological requirements for GI.

This course is designed for anyone with an interest in green infrastructure management at any level, from local to transnational.

Level: Intermediate

Prerequisites: A basic understanding of impact assessment and ecological concepts related to biodiversity conservation, natural capital, and valuation of ecosystem services.

Language: English

Duration: 2 days (29-30 April)

Min/Max: 10-25

Price: \$480

Instructors: **Dr. Asha Rajvanshi**, Independent Environmental Expert (India)
Dr. Vinod.B. Mathur, Affiliate Faculty with Warner College of Natural Resources, Colorado State University (India)



Please register early!

Courses will be cancelled if they do not reach the minimum number of paid participants by 11 March.

4 Health impact assessments in the context of AI: Challenges and perspectives

HIA is a rapidly evolving tool, which is mandatory in many countries at global level.

The aim of the course is to introduce characteristics and process of HIA (also from a comparative standpoint), as well as discuss how national guidelines and requirements for HIA influence the outcome; moreover, a part of the course will be specifically devoted to the application of AI to HIA. During the course, perspectives, problems and pitfalls of HIA (also with potential use of AI) will be discussed.

We will address the following topics:

- Introduction about HIA
- Aims and development of HIA
- Public involvement
- Process and methodology
- HIA implementation within other Impact Assessments and standalone
- Guidelines and administrative procedures: examples from various countries (including Italy)
- Introduction about AI
- AI applied to HIA
- WHO approach to AI in connection with health

The course will also analyze, through case studies, HIA implementation in selected countries.

Level:	Intermediate/Advanced
Prerequisites:	Basic knowledge of public health issues and/or environmental issues. Such prerequisites do not apply to students.
Language:	English
Duration:	2 days (29-30 April)
Min/Max:	10-30
Price:	\$480
Instructors:	<p>Valentina Cavanna, Research Fellow and Lawyer, Turin University, Department of Law (Italy)</p> <p>Thomas Fischer, Professor and Director, University of Liverpool, Environmental Assessment and Management Research Centre, WHO Collaborating Centre for Health in Impact Assessments, School of Environmental Sciences (UK)</p> <p>Ben Cave, Director, Ben Cave Associates, Ltd., and University of Liverpool (UK)</p> <p>Giuseppe Magro, Adjunct Professor/Chair of IAIA25, Bologna University, Algebra Srl (Italy)</p> <p>Julia Nowacki, Technical Officer, World Health Organization, Regional Office for Europe (Germany)</p>

5 Sustainable finance, ESG, and impact assessment in the age of AI: Exploring the relationships and opportunities

The aim of this course given by ISFC and independent experts is to introduce the participants to the dominant sustainable finance frameworks, their reporting requirements, and their environmental and social assessment obligations that are relevant to the impact assessment profession. The course will cover environmental, social, and governance (ESG) concepts and their use in practice, the rise of taxonomies of sustainable economic activities, standardization of sustainability reporting and disclosure – and the role that AI can and will play in streamlining ESG-related data. The course will also look at how the financial industry is trying to measure and account for sustainability-related impact.

Level:	Foundational course (with some intermediate-level elements)
Prerequisites:	None.
Language:	English
Duration:	2 days (29-30 April)
Min/Max:	18-40
Price:	\$480
Instructors:	<p>Jiří Dusík, Social and Environmental Standards Technical Specialist for Europe and Central Asia, United Nations Development Programme (UNDP), (Czechia)</p> <p>Dr. Alan Bond, Associate Professor in Environmental Management in the School of Environmental Sciences at the University of East Anglia (UK) and Extraordinary Professor in the School of Geo and Spatial Sciences, North West University (South Africa)</p> <p>Linda Zeilina-Cross, CEO, International Sustainable Finance Centre (ISFC), (Czechia)</p> <p>Julian Toth, COO, International Sustainable Finance Centre (ISFC) & Director, Czech Sustainable Investment Forum (Czechia)</p> <p>Daniel Houska, Senior Sustainable Finance & EU Taxonomy Expert (ISFC), (Czechia)</p>

Training courses

6 Cumulative effects assessment

This course summarizes the state of professional practice regarding cumulative effects assessment (CEA) within IA processes, demonstrates fundamental requirements for CEA for a selected project in Italy, illustrates determination of significance of cumulative effects, discusses adaptive management (and monitoring) as follow-up activities for large-scale proposals (specifically for cumulative effects), and summarizes policy choices and collaboration approaches for the development of cumulative effects mitigation and management initiatives. The basic premise is that CEA should be an integral part of, and not separate from, both in-country and international IA processes. The fundamental requirements are focused on stepwise procedures with international best practice principles. These procedures and related principles identify key valued components (VCs), focusing on those for which CEA is appropriate; delineating spatial and temporal boundaries for each of the VCs; describing historical baseline and future conditions and trends; establishing cause-effect linkages between past, present, and future actions and VCs; determining the significance of cumulative effects; and development of adaptive management and project mitigation (and enhancement for positive effects) and regional management programs, as appropriate to deal with cumulative effects.

Practical processes for preparing, reviewing, and managing CEA-related documents will be emphasized, along with presentations on selected international case studies and workshop sessions involving interactive group project work. Practical discussions will be incorporated by the professional participants and presented to the entire class (an important feature viewed positively by recent participants' course evaluations).

Level:	Intermediate/Advanced
Prerequisites:	Foundation training on IA (impact assessment) or CEA (cumulative effects assessment) (professional-level short course or University-level specific course or program) and/or minimum of 2 years in professional experience in planning and conducting IA or CEA for environmental impact studies. Prerequisites do not apply to student participants.
Language:	English
Duration:	2 days (29-30 April)
Min/Max:	10-50
Price:	\$480
Instructors:	Bill Ross , Emeritus Professor of Environmental Design, University of Calgary (Canada) Miles Scott-Brown , Consultant (Canada) Michael D. Smith , Director, Environmental Process and Policy, WSP (USA)

7 Leadership in ESIA

The theme for IAIA25, "Impact Assessment in the Age of Artificial Intelligence," underscores the transformative role of AI in shaping sustainable and equitable advancements. Leadership training remains crucial for impact assessment professionals, especially as they navigate the complexities introduced by AI in their field. By equipping leaders with essential skills, knowledge, and emotional intelligence (EQ), this training ensures that they can effectively lead IA processes in an AI-driven context.

The leadership course tailored for IAIA25 recognizes the unique challenges and opportunities presented by artificial intelligence in impact assessments. It prepares IA professionals not only to manage the technical aspects but also to engage with diverse stakeholders more effectively using AI-enhanced tools and methods, while emphasizing the importance of EQ. As AI increasingly influences environmental, social, and compliance factors, impacting project costs and schedules, IA leaders must adeptly integrate these AI insights into project planning and decision-making, ensuring that they maintain empathy and understanding in stakeholder interactions.

This course will explore the specific leadership roles within the context of AI in IA, offering practical tools for effective communication, negotiation, and influence enhanced by AI capabilities. It will also delve into the dynamics of project teams in an AI-enhanced environment and provide opportunities for real-world application of the learned skills. Additionally, the course emphasizes personal reflection, self-development, and the cultivation of EQ to enhance existing leadership skills and cultivate the mindset needed for leading in an AI-integrated IA framework.

By participating in this leadership training, IA professionals will not only elevate their capabilities to lead and collaborate effectively but also drive forward the positive impact of AI in achieving a just and sustainable transformation in their projects, all while maintaining the human-centric approach critical in the age of artificial intelligence.

Now more than ever, the conversation about leadership, ethics, ethical leadership, and emotional intelligence is paramount in the field of impact assessment, highlighting their intertwined significance in navigating the challenges and opportunities presented by AI.

Level:	Intermediate/Advanced
Prerequisites:	General experience in managing or coordinating IA professional teams through to impact statement submission/review. An interest in self-development, particularly leadership and management level skills to enhance personal and project team performance.
Language:	English
Duration:	2 days (29-30 April)
Min/Max:	10-30
Price:	\$480
Instructor:	Palash Sanyal , Advisor, Coach and Trainer (Canada)

8 Social risk management for major projects: Tools and frameworks

This IAIA training course will equip participants with current frameworks and tools for identification, assessment and management of social risks, growing your capacity to consistently and systematically mitigate social risks and deliver social value. In our 1st year of delivery at IAIA the course had an average overall satisfaction of 90%. As one participant told us, “The course was informative and I learned loads.”

This training will improve participants’ capacity to identify social risks consistently and systematically by introducing current international frameworks. Participants will gain practical tools and skills in applying leading social risk management frameworks. They will learn strategies to engage with communities and stakeholders to address those risks to maximize social value from major infrastructure, including that related to climate adaptation and mitigation.

This interactive course will draw on the work of the Australian National University Institute for Infrastructure in Society (I2S) to discuss: Key theories and international frameworks for social risk management; the 3Ps (Place, Project, Proponent) Social Risk Scanner Tool; the Infrastructure Engagement Excellence (IEE) Standards and related Project Assessment Tools; and case studies to demonstrate application of the tools. Participants will have the opportunity to apply and share their own project experiences during the training. Group reflections will be used to share learnings.

Level: Intermediate

Prerequisites: At least three years in-field experience in impact assessment, risk management, community/stakeholder engagement or sustainability in major projects; a university degree; and familiarity with social impact and/or risk management requirements for major projects.

Language: English

Duration: 2 days (29-30 April)

Min/Max: 15-45

Price: \$480

Instructors: **Sara Bice**, Co-Founder and Director, Institute for Infrastructure in Society (I2S) at the Crawford School of Public Policy, the Australian National University, where she also serves as Head, Policy and Governance Program (Australia)

Dr. Ruth O’Connor, Research Fellow, Australian National University, Institute for Infrastructure in Society (Australia)

Dr. Emerson Sanchez, Research Fellow, Australian National University, Institute for Infrastructure in Society (Australia)

9 Public participation, impact assessment, and artificial intelligence: Opportunities and challenges

This course provides an insight into public participation (P2) in Impact Assessment (IA), and the influence and potential of Artificial Intelligence in practice. It draws on 3 specific frameworks:

1. International Association for Public Participation (IAP2)
2. IAIA Best Practice Principles for Public Participation
3. Handbook of Public Participation in Impact Assessment (June 2024)

It looks at engagement specific to IA, being ethically-centred in approach, and the unique and critical role that IA practitioners play in PP.

By course end, participants will be able to:

- Define PP, related terms and what makes it unique in IA.
- Articulate the opportunity/challenges of Artificial Intelligence in PP in IA.
- Identify what makes PP meaningful and effective.
- Identify the role values, ethics, power and influence play in PP, and leadership attributes needed.
- Apply the IAP2 spectrum and Profiles of Engagement model to IA practice.
- Explain distinctions between IAP2, IAIA and the Handbook frameworks—including 10 essential elements and 3 contextual elements set out in the *Handbook of Public Participation in Impact Assessment* (co-editors Tanya Burdett and John Sinclair, also co-chairs of IAIA’s Public Participation Section)
- Reflect on/apply the principles of diversity, equity and inclusion, and intercultural engagement.

Level: Intermediate/Advanced

Prerequisites: Whether working in developed or developing countries, prerequisites include an understanding and awareness of public participation and a willingness to adapt your approach and techniques to take them to the next level.

Language: English

Duration: 2 days (29-30 April)

Min/Max: 10-24

Price: \$480

Instructors: **Tanya Burdett**, Director, Essential Planning Ltd (UK), Burdett Associates Pty Ltd (Australia)

Anna Johnston, Environmental Lawyer at West Coast Environmental Law (Canada)

Training courses

10 Strategic Thinking for Sustainability (ST4S) with systems thinking: Exploring governance challenges created by artificial intelligence

Largely, the practice in impact assessment (IA) is driven by project development rationale, even in planning and program making, limiting the capacity of IA to address strategic levels of decision-making within time, space, and contextual governance issues. Strategic environmental assessment (SEA) was meant to fill this gap by starting earlier; taking broader, long-term approaches; assessing non-site-specific development intentions; and recognizing the complexity of systems. Sustainability assessment (SA) was meant to help ensure the intertwined consideration of social, economic, and environmental issues. Practice shows that more holistic and meaningful strategic approaches are needed with an understanding of systems and how they work.

This course will introduce participants to creative ways in performing IA and how to apply strategic thinking in combination with systems thinking to enable transitional processes towards sustainability. It will explore the possible articulation with AI particularly in handling big data, facilitating analysis and assessment and engaging stakeholders.

Expected learning outcomes include in-depth knowledge of the added value of applying strategic thinking and systems thinking in IA, and the differences between a strategic-based approach and an effects-based approach.

Learning techniques include dialogues, sharing of experience, short presentations, and case studies as well as participatory systems modelling.

Level:	Advanced
Prerequisites:	Basic knowledge of policy-making, planning and some level of experience with strategic environmental assessment, sustainability assessment, or environmental impact assessment. Previous knowledge of systems thinking and analysis is not required.
Language:	English
Duration:	2 days (29-30 April)
Min/Max:	10-25
Price:	\$480
Instructors:	Maria R. Partidario , Full Professor, Instituto Superior Tecnico (IST), Universidade de Lisboa, Portugal, and Adjunct Professor University of Aalborg, Denmark (Portugal) Johanna S. Gordon , Lecturer and Researcher at the Department of Natural Science, Design and Sustainable Development, Mid Sweden University, Östersund (Sweden)

11 Trauma-informed impact assessment: planning for transformation in an era of artificial intelligence

As impact assessment professionals, it is imperative to remain vigilant in not creating further harm, especially with the continued integration of artificial intelligence in our processes. Trauma-informed approaches enable us to scale our work down to a human level, ensuring that while we leverage modern tools and innovations, we retain a human fingerprint in all that we do.

Trauma is a term used to describe the psychological and emotional consequences of experiencing a distressing event. Indigenous and BIPOC peoples globally have endured centuries of colonial policies and practices with the explicit intention of genocide and assimilation. These persistent and cumulative experiences of trauma have led to intergenerational social, psychological, and economic impacts for many communities, all of which play a critical role in how communities and people engage in IA processes, express impacts, and understand mitigation measures.

This course provides practical tools to ensure impact assessment does no further harm to communities, stakeholders, and professionals. Participants will understand trauma and its neurobiology, types of trauma relevant to IA, and the importance of being trauma-informed in an era of technology. The course is highly interactive, incorporating multimedia, story work, and group activities, offering practical tools for everyday application.

Level:	Foundational
Prerequisites:	None
Language:	English
Duration:	2 days (29-30 April)
Min/Max:	10-40
Price:	\$480
Instructors:	Somia Sadiq , Founder, Principal Partner, Narratives (Canada) Desirée Theriault , Partner, Senior Landscape Designer, Narratives (Canada)

12 Human rights in impact assessment

This two-day course is designed to provide professionals and decision makers who work in sectors with high risk for human rights, including digital technologies, with information and tools to understand and address human rights impacts, challenges, and opportunities related to the projects.

Through cases and exercises, the participants will discuss human rights impacts in the value chain of projects (including sourcing of critical minerals) and learn practical ways to operationalize the corporate responsibility to respect human rights as established in the United Nations Guiding Principles on Business and Human Rights. The course includes an overview of the regulatory landscape related to business and human rights, as well as reflects on gender dimensions and the and impacts on Indigenous peoples' rights and environmental/human rights defenders. A session will be specially dedicated to human rights risk of digital technologies and methodologies and tools to identify and assess them.

Finally, the participants will learn principles and methodologies to ensure the identification and assessment of human rights risks and impacts and how to apply a human rights-based approach for a meaningful engagement with workers and communities including vulnerable groups during impact assessment phases and due diligence.

Level:	Intermediate
Prerequisites:	Some knowledge or experience in developing, commissioning, or reviewing impact assessment or due diligence of renewable energy projects value chain. Basic knowledge of human rights would be an advantage but is not required. Professionals and students with knowledge of human rights but no previous experience in energy projects can also participate.
Language:	English
Duration:	2 days (29-30 April)
Min/Max:	10-25
Price:	\$480
Instructors:	<p>Gabriela Factor, Chief Adviser, Human Rights, Tech and Business, Danish Institute for Human Rights (Denmark)</p> <p>Line Gamrath Rasmussen, Senior Adviser, Human Rights and Technology, Danish Institute for Human Rights (Denmark)</p> <p>Signe Andreasen Lysgaard, Chief Adviser, Human Rights, Tech and Business, Danish Institute for Human Rights (Denmark)</p>

13 More effective EIA follow-up: How to seamlessly connect EIA and EMS

EIA implementation and follow-up has been recognized as one of the most crucial processes of impact assessment in achieving its outcomes. In general terms, "follow-up" refers to "post-decision processes," a crucial part of which is ensuring that recommendations and commitments made through the EIA process are actually implemented. There are many tools that can support this implementation process, including environmental management systems (EMS) and many other related sustainability management tools such as HSE-MS, corporate social responsibility (CSR), and sustainability reporting in accordance with the Global Reporting Initiative (GRI), to name just a few. Dozens of national, sectoral, and international standards, guidelines, etc. have been developed to inform such processes, and these are widely used. While considerable efforts and investments are made in both EIA and EMS, a lack of integration of these activities contributes to suboptimal environmental outcomes and a failure to realize the potential of these well-established environmental management tools.

This intermediate two-day training course focuses on strengthening the linkage between EIA and EMS throughout the life cycle of projects by improving communication, interaction, and partnership between its multiple role players. In the first module, a quick review of the pre-decision tools (conventional EIA) and post-decision tools (such as EMS/HSE-MS, the relevant international standards such as ISO 14001:2015 and ISO 45001:2018. etc.) will be provided. The second module will focus on how pre-decision EIA should be linked to such post-decision management tools. Improving communication, interaction, and partnership is the focus of the third module, in which the participants will practice identifying the role of other parties and when, how, and on what key issues they should communicate with them. In the fourth and final module, the well-known "HSE cultural maturity theory" and its relationship with the EIA implementation will be discussed. Participants themselves will try to develop ways of making the entire EIA/EMS a seamless, flexible process in a way that challenges the very notions of "pre-decision" and "post-decision."

Level:	Intermediate
Prerequisites:	Participants are expected to have an understanding of EIA/ SIA processes and terminology, and some awareness about environmental management systems (EMS).
Language:	English
Duration:	2 days (29-30 April)
Min/Max:	10-25
Price:	\$480
Instructor:	Behzad Raissiyan , Environmental Planning and Governance Advisor (Iran)

Training courses

14 Psychology-informed impact assessment: A pathway to better outcomes for people and the environment

The field of psychology has traditionally been disconnected from the practice of Impact Assessment (IA). This disconnection has kept the field from understanding issues such as ongoing conflicts and with local communities, recurring communication difficulties of project information, and a prevalent lack of influence with internal stakeholders and decision makers.

This foundational course represents a formal attempt to demonstrate what a psychology-informed approach to IA is, why it matters, and how it can be applied in practice. A psychology-informed approach to IA is transversal to different types of IAs, methodologies, and management issues. Our course considers three key areas of IA practice where this approach can be applied:

- Assessment practice, to enhance impact understanding and assessment.
- Community relations, to improve engagement, communication, and conflict resolution.
- Leadership, to improve internal communication and influence with decision-makers and help with professional development.

By the end of the course, participants will gain a comprehensive understanding of psychological concepts, theories, and methodologies, along with practical experience in applying them to various aspects of IA practice.

Although this course does not explicitly mention artificial intelligence (AI), it is grounded in contemporary IA methodologies that increasingly incorporate AI-based research, proofreading, and data analysis.

Level:	Foundational
Prerequisites:	A general understanding of the IA practice and professional experience in this space.
Language:	English
Duration:	2 days (29-30 April)
Min/Max:	10-30
Price:	\$480
Instructors:	Sérgio Moreira , SPGrow360 Manager, Community Insights Group (Portugal) Ana Maria Esteves , Founder and Director, Community Insights Group (Netherlands)

Technical visits

Please register early!

Technical visits will be canceled if they do not reach the minimum number of paid participants by 11 March 2025.

IMPORTANT DATES:

11 March: Visits without the minimum registrants after this date are canceled.

10 April: Last date to register.

ABOUT TECHNICAL VISITS

Who can register? IAIA25 delegates and their guests can register for technical visits at the same rate.

How do I secure my spot? You must be pre-registered and pre-paid by 10 April. Registrations are processed in the order payment is received.

Can I add a technical visit later? If you have already registered for the conference but want to add a technical visit for you or a guest, contact info@iaia.org with your request; this cannot be done online. Any additions must be made by 10 April.

How many people on each visit? Minimum/maximum numbers are noted in each description. If the visit you choose does not reach the minimum number by 11 March, IAIA HQ will notify you and provide refund information or offer to transfer you to another visit.

Where do we meet? Technical visits depart from the conference venue. Plan to check in for the visit a minimum of 15 minutes prior to noted departure time. Busses will leave on time. Late arrivals will not be admitted.

What if I need to cancel? If you must cancel, the fee will be refunded, less an administrative fee of 25% of the technical visit cost, provided we receive written cancellation notice by 10 April. No refunds will be given after that date.

Liability statement: IAIA, the organizing committee, and the venue will not be responsible for medical expenses, accidents, losses or other unexpected damage to property belonging to conference participants, either during or as a result of the conference and during all tours and events. Participants are strongly advised to arrange their own insurance for health and accident, lost luggage and trip cancellation.

Participants will be required to sign a liability release waiver upon check-in for the visits.

A | HERA AMBIENTE: FERRARA WASTE-TO-ENERGY PLANT AND MATERIAL RECOVERY FACILITY + FERRARA'S HISTORIC CENTER

Visit Hera Ambiente's Waste-to-Energy (WtE) plant and the Material Recovery Facility (MRF) in Ferrara. The WtE plant efficiently converts non-recyclable waste into energy, generating electricity and thermal power, while the MRF is dedicated to sorting and preparing recyclable materials collected through Ferrara's waste separation programs. Participants will gain insight into the advanced technology and processes used to promote circular economy principles by maximizing material recovery and reducing landfill reliance. Following the technical visit, participants will enjoy a guided tour of Ferrara's historic city center, a UNESCO World Heritage Site. The tour will explore key landmarks such as the Este Castle, the Palazzo dei Diamanti, and the medieval walls that still encircle the city.

Tuesday 29 April

Depart 10:00 | **Return** 17:00

Level of physical activity: Low (walking tour included)

Minimum-Maximum 30-50

Price \$120 (Price includes lunch and guide.)

Special notes Wear comfortable shoes for walking. Hera Ambiente facilities and Ferrara's city center are accessible to participants with mobility issues.

B | CINECA - HIGH-PERFORMANCE COMPUTING AND SUSTAINABILITY IMPACT MANAGEMENT

This technical visit will take participants to CINECA, a leading high-performance computing (HPC) facility in Casalecchio di Reno, Italy. CINECA is involved in various projects concerning impact and risk assessment, sustainability, and scientific computing technologies for national and international scientific communities. The visit will also include a guided tour of the facilities and an introduction to the Leonardo supercomputer at the Technopolo in Bologna.

Tuesday 29 April

Depart 14:00 | **Return** 17:00

Level of physical activity Low

Minimum-Maximum 30-50

Price \$30 (Price includes guide.)

Special notes Wear comfortable shoes for walking indoors. CINECA is accessible for participants with mobility issues.



Technical visits



C | CENTRO EURO-MEDITERRANEO SUI CAMBIAMENTI CLIMATICI (CMCC) + BOLOGNA'S HISTORIC CENTER

The Centro Euro-Mediterraneo sui Cambiamenti Climatici (CMCC) in Bologna is a leading research center focused on climate change impacts, adaptation, and mitigation strategies. The CMCC conducts advanced research combining science, policy, and economics to address climate challenges across the Mediterranean region.

The visit to CMCC will be followed by a guided tour of Bologna's historic center, where participants will explore key architectural and cultural landmarks, including Piazza Maggiore, the Two Towers, and the Basilica of San Petronio.

Wednesday 30 April

Depart 10:00 | **Return** 17:00

Level of physical activity Low (walking tour included)

Minimum-Maximum 15-45

Price \$120 (Price includes lunch and guide.)

Special notes Wear comfortable shoes for walking. The CMCC and the city center are accessible to participants with mobility issues.



D | PROGETTO HYDROGEN VALLEY + GUIDED TOUR OF MANTUA

Participants will receive an in-depth introduction to the Hydrogen Valley project, exploring its goals in hydrogen energy production, sustainability, and innovation. The visit will demonstrate how renewable energy technologies are being implemented to drive the local economy while addressing global environmental challenges. Experts will explain the role of hydrogen in Italy's energy transition strategy and provide a tour of key facilities involved in hydrogen production and research.

The tour will also include a guided visit to key cultural and historical landmarks of the city of Mantua, a UNESCO World Heritage site. Participants will gain insights into how cutting-edge renewable energy projects are integrated within the region's economic and environmental strategies while enjoying the rich history and architecture of Mantua.

Monday 5 May

Depart 09:00 | **Return** 17:00

Level of physical activity Low (some walking involved)

Minimum-Maximum 30-50

Price \$125 (Price includes lunch and guide.)

Special notes Wear comfortable walking shoes. These sites are accessible for participants with mobility issues.



Financial aid opportunities



With over 1000 delegates from 80+ nations around the world, IAIA25 is your opportunity to network with professionals and learn about current best practice principles, recent tools, and techniques for impact assessment.

A discounted student registration fee is available, as are other financial aid opportunities for students, young professionals, and others.

Read more about these opportunities and apply online at:

<https://2025.iaia.org/financial-aid-opportunities/>

ENERGY CAPACITY BUILDING STIPEND (CBS) PROGRAM

IAIA, with support from the Government of Norway and in partnership with the Norwegian Environment Agency, offers this CBS program to aid individuals in attending IAIA25. The primary objective of this stipend is to provide training and knowledge to impact assessment professionals in Norway's partner countries who are working to sustainably manage their country's energy resources. A select number of applicants who meet all qualifications will receive a stipend to attend the conference.

The application deadline is **27 November 2024**.

RITA R. HAMM IA EXCELLENCE SCHOLARSHIP

The Rita R. Hamm IA Excellence Scholarship honors the legacy that IAIA's former CEO has left on the organization and the field of impact assessment. This scholarship allows young practitioners in the region of the host country to attend the IAIA annual conference. Potential candidates are those who:

- Have never attended an IAIA annual conference in the past.
- Have submitted an abstract to present a paper at IAIA25 by the 31 October abstract deadline.

The application deadline is **8 January 2025**.

STUDENT TRAINING COURSE FEE WAIVERS

A limited number of free training course registrations are available to student participants of IAIA25 once courses reach their minimum paid enrollments. If you are interested, please send the following to kiesha@iaia.org:

1. Your name
2. A 300-word statement of interest explaining how the chosen training course could contribute to your research or student career
3. Proof of full-time student status (proof can be provided in the following forms: a copy of a recent transcript or a letter from an administrative professional indicating your full-time student status)
4. First and second course choices (see courses listed on pages 11-18).

Applications for free course registrations will be accepted from **10-24 March 2025**. Allocations of the free training course slots will be made in late March based on the order in which the requests were received and subject to instructor approval.

Sponsors and exhibitors

SPONSORSHIP OPPORTUNITIES

Reach **over 1,100 key participants** in the global impact assessment community, representing over 80 nations.

Sponsorship demonstrates your commitment to sustainability to delegates from around the world while you contribute to the improvement of impact assessment locally and globally.

WHO WILL YOU REACH?

- Government
- Consultants
- Private Sector
- Development Banks
- Education & Research
- NGOs

DID YOU KNOW? >>> 63% of IAIA members are executive/senior level.

WHY SPONSOR IAIA25?

IAIA is the only interdisciplinary international association dedicated to impact assessment. Our annual conferences bring together a unique mix of experts and professionals and a unique opportunity for you to promote your organization. Recent conferences have included between 800 and 1,000 delegates from 80+ countries.

- Increase your visibility before an international audience of environmental and social professionals.
- Be recognized as a global thought leader.
- Demonstrate your commitment to sustainability and corporate social responsibility.
- Be associated with other industry leaders.
- Ensure that your company or institution information is forefront during the conference.
- Enhance your presence internationally.
- Give your staff the opportunity to network with leading practitioners and experts.
- Ensure that your company will be remembered by the delegates long after the event is over.

WHAT BENEFITS DO SPONSORS RECEIVE?

Exclusive opportunities and customized sponsorship packages are available for any budget. Benefits for sponsors may include:

- Complimentary and discounted registrations
- Recognition in IAIA e-newsletter (circulation 14,000+)
- Online recognition on the IAIA25 sponsors page
- Mobile app push notification to delegates
- Special rates for training courses and exhibit booths
- And more!

INTERESTED? CONTACT US!

Contact us to create a package just right for you.

Caitlyn Grimm, IAIA HQ
caitlyn@iaia.org | +1 701 297 7908

If you are in Italy, contact:
Roberta Vicentini Magro
r.vicentini@algebrasrl.com | +39 347 45 63 140

To ensure that you receive all promised benefits, please confirm your sponsorship by **28 February 2025**. After that date, benefits cannot be guaranteed.

Check out the benefits available to your company by downloading the full IAIA25 sponsorship prospectus at <https://2025.iaia.org/sponsors-exhibitors/>



EXHIBITORS

Advertise your company or demonstrate your project: prominent display space is available! Contact IAIA HQ (caitlyn@iaia.org) before 5 March 2025 for information and rates on exhibit booths, table space, and poster panels.

MEET THE IAIA SECTIONS!

IAIA has special-interest Sections that cover different types and aspects of impact assessment.

IAIA Sections provide opportunities for IAIA members with these mutual interests to share experiences and discuss ideas in an informal setting. Sections provide a forum for active topical debate and for development and promotion of good practice. Some Sections have a rolling program of work throughout the year and all have opportunities to meet virtually during the year.

The members of the Sections and their activities are the lifeblood of IAIA: through the Sections, IAIA members can feed into the organization of each annual conference, publish different materials, and develop new lines of thought.

WHY GET INVOLVED IN SECTIONS?

- Sections are a networking forum for IAIA members, where you can meet your colleagues with similar professional interests.
- Sections promote your personal professional development.
- Sections develop interesting activities that you may want to join.
- See www.iaia.org/section-discussion-forums.php for more information.

WHERE CAN I FIND THE SECTIONS AT THE ANNUAL CONFERENCE?

- Each Section will hold a Section meeting during the conference, which everyone is welcome to attend (see page 10). The meeting schedule will be posted in the final program.
- All sessions that have been organized by the Sections are clearly identified in the final program.
- Section chairs will be identified by ribbons on their name tags so that you can find them during the conference.

ANY QUESTIONS?

IAIA members, reach out to the Section Chairs on The Hub. Non-members, contact info@iaia.org, or visit www.iaia.org > Membership > Sections for more information.



Academia

Thomas Fischer
Reece Alberts

Agriculture, Forestry, and Fisheries

Ijeoma F. Vincent-Akpu
Juan Carlos Tejada Gonzalez

AI & Emerging Technologies

Jiri Dusik
Alan Bond
Miltos Ladikas

Biodiversity & Ecology

Denny Grossman
Jo Treweek

Climate Change

Andreea Nita
Pantea Niksirat
Sumia Mohamed

Corporate Stewardship & Risk Management

Open

Cultural Heritage

Arlene Fleming
Chris Polglase

Cumulative Effects

Martin Haeefe
Angeles Mendoza Sammet
Johanna Gordon

Disasters & Conflict

Charles Kelly
Annica Waleij

Governance and Implementation Systems

Cheryl Wasserman
Phil Seeto

Health

Ryngan Pyper
Valentina Cavanna

Indigenous Peoples

Diana Lewis
Dyanna Jolly

Public Participation

John Sinclair
Timothy J. Peirson-Smith
Tanya Burdett

Social Impact Assessment

Irge Satiroglu
Katherine Witt
Ilse Aucamp

Students and Young Professionals

Mathilde Butler

Conference information

LOCATION AND DATES

IAIA25 will take place from 1-4 May 2025 at the Bologna Congressi (Bologna Congress Center) with adjunct events planned before, during, and after the conference. Activities will take place at the convention center unless otherwise noted.

The address is Piazza della Costituzione, 4, 40128 Bologna BO, Italy | www.bolognacongresscenter.com

LANGUAGE USED (CONFERENCE)

English is the primary language used at IAIA conferences. Unless otherwise noted, all sessions will be held in English.

FINAL PROGRAM AND MOBILE APP

This preliminary program contains the tentative schedule and plans; be sure to check the final program to confirm details of activities in which you would like to participate. Please note registration deadlines for special events.

To conserve paper, IAIA plans to have a minimal final program. It will be posted in PDF on the website approximately one month prior to the conference, and it will be available in hard copy at conference check-in at the convention center.

The final program will also be available in the IAIA25 mobile app, which delegates can use to search for sessions and speakers, select favorite sessions to create a personal agenda, take notes, and more. The mobile app will be available approximately two weeks prior to the conference.

PUBLICATIONS

IAIA plans to publish optional conference papers and PowerPoint slides online following the conference. A Program Committee representative will contact you with details after your paper or poster abstract is accepted.

Participants are encouraged to submit their papers for possible publication in IAIA's journal, *Impact Assessment and Project Appraisal*. See www.tandfonline.com/r/iapa for submission information.

CONFERENCE ATTIRE

IAIA conferences are generally business casual.

PRESENTATION EQUIPMENT

PowerPoint projectors and laptop computers will be provided in each session room. Presenters are responsible for arranging and paying in advance for any other equipment needed for their presentations. Contact IAIA HQ (caitlyn@iaia.org) for price information and to order equipment before 5 March 2025. For on-site inquiries, payment will be required at time of request, and IAIA cannot guarantee that equipment will be available.

BUSINESS SERVICES

To avoid equipment rental costs which would necessarily be passed on to delegates in the form of higher registration fees, IAIA does not provide copying, printing, computers or other business services or equipment on-site. Please plan to arrive prepared, or contact your hotel in advance to ensure that it offers any facilities you may need.

MEALS

IAIA will provide lunches 2-4 May and coffee breaks 1-4 May at the convention center.

On 1 May box lunches will be available for purchase at the venue.

Based on the data collected via registration forms, IAIA will estimate a percentage of vegetarian meals. This does not guarantee accommodation of individual preference.

ACCESSIBILITY

If you have a disability and/or have special accessibility needs and require assistance, please contact IAIA HQ (caitlyn@iaia.org | +1.701.297.7908) by 5 March 2025 to discuss your specific needs.

VIDEO/AUDIO POLICY

Individuals officially identified by IAIA may photograph, videotape, and/or audiotape conference events. By attending the conference, you agree to allow your image to be used by IAIA. Individuals are not permitted to record with personal audio or video equipment or other recording devices such as cell phones, cameras, or recorders without prior permission from IAIA and the speaker/presenter.

INSURANCE AND LIABILITY

IAIA, the organizing committee, and the venue will not be responsible for medical expenses, accidents, losses, or other unexpected damage to property belonging to conference participants, either during or as a result of the conference and during all tours and events. Participants are strongly advised to arrange their own insurance for health and accident, lost luggage, and trip cancellation.

REGISTRATION AND FEES

All conference participants, including delegates, sessions chairs, invited speakers, organizers, exhibitors, and paper and poster presenters, are required to register for the conference at the in-person or exhibitor rate.

IAIA does not have funds available to pay registration and/or travel expenses for program participants.

In-person delegates will receive a name badge upon check-in. The badge is an official pass and must be worn to obtain entry to conference functions. If tickets are required for any events, they will be distributed by HQ. All delegates will receive access instructions for the mobile app in advance of the conference.

PAYMENT AND REFUND POLICIES

Registration fees should accompany the registration form. **To qualify for the Early Bird rate, both the registration form and payment must be received by 22 January 2025.** Fees are accepted by MasterCard, Visa, or American Express and are charged in US Dollars (USD). Checks made payable to IAIA in USD drawn on a US bank are also accepted.

Registration closes 10 April 2025. Pre-registration and pre-payment by 10 April are required. Cash payments on-site will not be accepted.

IAIA will refund registration fees upon written request received before 10 April 2025. A US\$125 processing fee will be retained. **After 4 April, no refunds will be issued for cancellations or no-shows.** Substitutions for paid registrants may be made in writing without financial penalty. Refunds will be issued after the conference. The refunded amount may differ depending on exchange rates.

General information

HOST CITY

Bologna, Italy, beckons with its rich tapestry of history, culture, and culinary delights. Wander through its medieval streets, where ancient towers stand sentinel over bustling markets and charming cafes. Indulge in the city's gastronomic treasures, from sumptuous handmade pasta to savory mortadella. Admire architectural marvels like the iconic Two Towers and the grandiose Basilica di San Petronio. With its timeless charm and vibrant atmosphere, Bologna promises an unforgettable experience.

CONFERENCE HOTELS

IAIA is working with the Bologna tourism bureau to provide a list of hotels. See more information at <https://2025.iaia.org/> > More Info > Plan Your Stay.

CLIMATE

In May, Bologna, Italy, experiences spring weather with cool winds, vibrant flowers, and temperatures that start to rise. The average low temperature at night is 15°C (59°F) and the average high temperature during the day is 22°C (72°F).

LANGUAGE USED

Italian is the official language of Italy and is the most widely spoken language in the country.

PASSPORTS AND VISAS

All attendees from outside Italy are responsible for making sure they have the correct documentation to enter the country. Delegates are strongly advised to check with their local embassies and explore visa requirements as early as possible, and should a visa be required, to apply as soon as possible as the process can be time consuming.

Helpful site:

Ministero degli affari esteri e della Cooperazione Internazionale (Ministry of Foreign Affairs and International Cooperation): <https://www.esteri.it/en/servizi-consolari-e-visti/ingressosoggiornoinitalia/>

TRANSPORTATION WITHIN BOLOGNA

Bologna's Guglielmo Marconi Airport, for both national and international flights, is located 6 km from the city center.

There are several ways to get from Bologna Airport to the city center, including:

Marconi Express: An electric monorail that connects the airport to the central train station in about 7 minutes. The Marconi Express is a sustainable option, with 30% of its energy coming from renewable sources. Trains run frequently, with every 7 minutes at peak times.

Bus: The bus is the cheapest way to get to the train station. The 81/91 bus runs from Birra, which is a 20-minute walk from the airport. The Line 944 bus also connects the airport to the city.

Taxi: A taxi ride to or from the city center takes around 20 minutes and costs between €20–25. In Bologna, to book a cab, you should generally call the company's number or wait at a taxi stop (see "More Info" on the IAIA25 web site (<https://2025.iaia.org/#>) for a list of stops); taxis do not stop randomly. Some taxi companies in Bologna include Cotabo Taxi, taxibologna.it, Cosepuri, and Saca. The most important company in Bologna is InTaxi (<https://bolognaintaxi.com/>); they also have an app you can download.

Uber: Uber is an available option in Italy, but it is not commonly used and could take some time.

Helpful sites:

Welcome Bureau Bologna: <https://www.bolognaconventionbureau.it/>

Bologna Experience: <https://www.bologna-experience.eu/how-to-arrive-and-move-around-bologna/>

BUSINESS HOURS

The usual Italian business hours are from 8:00 or 9:00 a.m. to 12:00 or 1:00 p.m. and from 2:00 p.m. to 5:00 or 6:00 p.m., Monday through Friday. As a general rule, shops are open from Monday to Saturday. Some are open from 9 a.m. to 7:30 p.m.; others close at lunchtime, approximately from 1 p.m. to 3 p.m.

CURRENCY AND CREDIT CARDS

The monetary unit in Italy is the Euro (€). The conversion rate as of October 2024 is €1.00 to US\$1.11. ATMs can be found in the airport and all main shopping streets. Visa and MasterCard are widely accepted throughout Italy. American Express is often accepted, but not in every business/shop or in general in Italy.

TIPPING

Tipping is not required in Italy, but it is appreciated in some situations.

Restaurants: While not required, diners may round up the bill or leave a small tip (5–10%) for exceptional service.

Tour guides: A 5–10% tip is typical for tour guides.

Hotel porters: One euro per bag is a good rule of thumb.

Cafés: While not expected, rounding up and leaving change for the staff is appreciated.

Taxis: It is common to round up and give your driver the change.

ELECTRICITY

The standard voltage is 230 V at a frequency of 50 Hz. Italy uses three types of plugs: C, F, and L. Plug type C has two round pins, plug type F has two round pins with two earth clips, and plug type L has three round pins.

TAXES

Shopping in Italy is subject to VAT (sales tax) of 22%. Visitors may be able to claim some VAT back on purchases made in Italy and take advantage of a duty-free allowance on goods bought outside the EU. Look for the "Tax-Free Shopping" sign in the windows of participating stores. To obtain your tax refund, you must complete a valid tax refund form, which you can get from participating stores. Present this form and goods to customs on departure at the airport, and you can receive your refund on the spot at some airports; otherwise, you can mail your tax refund form to the store, and a refund will be issued.

VISITOR INFORMATION

Bologna Welcome: <https://www.bolognawelcome.com/en>

Italia.it: <https://www.italia.it/en/emilia-romagna/bologna>

Committees | About IAIA



ABOUT IAIA

The **International Association for Impact Assessment** was organized in 1980 to bring together researchers, practitioners, and users of various types of impact assessment from all over the world. IAIA members number over 1,300 (expanding to a network of 5,000+ with our Affiliate organizations around the world) and represent over 100 countries. IAIA activities are carried out locally and regionally through its extensive network of affiliates and branches.

IAIA's Vision: IAIA is the leading global network on best practice in the use of impact assessment for informed decision making regarding policies, programs, plans and projects.

IAIA's Mission: To provide the international forum for advancing innovation and communication of best practice in all forms of impact assessment so as to further the development of local, regional, and global capacity in impact assessment.

IAIA's Values: IAIA promotes the application of integrated and participatory approaches to impact assessment, conducted to the highest professional standards. IAIA believes the assessment of the environmental, social, economic, cultural, and health implications for proposals to be a critical contribution to sound decision-making processes, and to equitable and sustainable development. IAIA is committed to the promotion of sustainability, the freedom of access to information, and the right of citizens to have a voice in decisions that affect them. When we assess the impact of policies, plans, programs, or projects, we promote the free flow of complete, unbiased and accurate information to decision makers and affected parties. We believe that impact assessments should be inclusive and comprehensive, addressing the broader social and health impacts as well as any impacts on the biophysical environment. Respect for human rights and human dignity should underpin all assessments. We acknowledge that we have a duty of care to both present and future generations.

REDUCING THE CARBON FOOTPRINT

IAIA continues to strongly support the need to reduce the carbon footprint of our conferences.

To this end, US\$7 from every conference registration will be donated to a local organization for further environmental causes.

IAIA encourages conference delegates to travel green! See Green Your Travel (<https://2025.iaia.org/green-your-travel/>) for some suggestions to help you get started.

CONFERENCE CO-CHAIRS

Giuseppe Magro
Roberta Vicentini Magro

TECHNICAL PROGRAM COMMITTEE

Giuseppe Magro (Chair)
Valentina Cavanna
Celesa Horvath
Charles Kelly
Jack Krohn
Francesco Mazzei
Ahmed Sanda

PROGRAM COMMITTEE

Giuseppe Magro (Chair)
Luca Maffezzoni
Roberto Mezzalama
Stefania Pellegrini
Marco Sumini
Vittorio Ingegnoli e Marco Sumini
Giampaolo Turini
Roberta Vicentini
Cinzia Vischioni

LOGISTICS AND LOCAL ARRANGEMENTS COMMITTEE

Roberta Vicentini Magro (Chair)
Luca Bertuol
Davide Cordioli
Alice Cusinato
Marco Dellabella
Giuliana Fiini
Mariagrazia Lugo
Agostino Monteverdi
Cinzia Vischioni

SPONSORSHIP COMMITTEE

Roberta Vicentini Magro (Chair)
Gary Baker
Valentina Cavanna
Miguel Repas Concalves
Eduardo Goya
Giuseppe Magro
Iocca Marcello
Roberto Mezzalama
Agostino Monteverdi

1 | DELEGATE INFORMATION

Please fill out form completely. Type or print neatly in BLOCK letters. Be sure to include your name and organization exactly as you would like that information to appear on your delegate badge and/or online profile. Pre-registration and pre-payment by 10 April 2025 is required. Registrations will not be accepted on-site.

Today's date _____ (month)/_____ (day)/20_____ (year)

First name _____

Title _____

Address _____

State/Province _____

Country _____

Last (family) name _____

Organization _____

City _____

Postal Code _____

Email _____ @ _____

2 | REGISTRATION FEES (all fees in US\$)

	Early Bird (by 22 January)	Regular
IAIA Member (or Affiliate Member)	<input type="checkbox"/> \$695	<input type="checkbox"/> \$815
Non-member	<input type="checkbox"/> \$860	<input type="checkbox"/> \$980
Student (proof of current enrollment required).....		<input type="checkbox"/> \$290

3 | MEMBERSHIP RENEWAL (optional)

Tier 1 (Low Income Economies).....	<input type="checkbox"/> \$55
Tier 2 (Lower Middle/Upper Middle Income Economies).....	<input type="checkbox"/> \$85
Tier 3 (High Income Economies).....	<input type="checkbox"/> \$150

4 | PRE-CONFERENCE TRAINING COURSES (29-30 April)

Pre-registration and pre-payment by 11 March is encouraged. Courses may not be switched after 10 April.

1. More effective IA: Tools for stronger writing	<input type="checkbox"/> \$480
2. Transforming ESIA into action	<input type="checkbox"/> \$480
3. Nature-based solutions for greening the linear infrastructure.....	<input type="checkbox"/> \$480
4. Health impact assessment in the context of AI.....	<input type="checkbox"/> \$480
5. Sustainable finance, ESG, and AI.....	<input type="checkbox"/> \$480
6. Cumulative effects assessment	<input type="checkbox"/> \$480
7. Leadership in ESIA	<input type="checkbox"/> \$480
8. Social risk management for major projects.....	<input type="checkbox"/> \$480
9. Public participation, impact assessment, and AI.....	<input type="checkbox"/> \$480
10. Strategic thinking for sustainability.....	<input type="checkbox"/> \$480
11. Trauma-informed impact assessment	<input type="checkbox"/> \$480
12. Human rights in impact assessment.....	<input type="checkbox"/> \$480
13. More effective EIA follow-up.....	<input type="checkbox"/> \$480
14. Psychology-informed impact assessment	<input type="checkbox"/> \$480
Non-IAIA25 delegates	<input type="checkbox"/> add \$85

5 | TECHNICAL VISITS

Pre-registration and pre-payment by 11 March is encouraged. After 11 March, registrations will be accepted on a first-come, first-served basis until 10 April or the maximum number of paid participants is reached.

A. Hera Ambiente/Ferrera	29 April	# Persons _____	@\$120 = \$ _____
B. CINECA	29 April	# Persons _____	@\$30 = \$ _____
C. CMCC/Bologna	30 April	# Persons _____	@\$120 = \$ _____
D. Progetto Hydrogen/Mantua	5 May	# Persons _____	@\$125 = \$ _____

6 | SPECIAL EVENTS / PROGRAMS

Welcome reception	1 May	# Persons: Delegates _____	Guests _____
United Nations workshop	30 April	# Persons _____	@ \$30 = \$ _____
World Bank workshop	1 May	# Persons _____	@ \$50 = \$ _____
Banquet	4 May	# Persons _____	@ \$65 = \$ _____
Newcomer Network	1 May	<input type="checkbox"/> Yes, I am a FIRST-TIMER.	<input type="checkbox"/> Yes, I am a VETERAN.
I prefer vegetarian meals		<input type="checkbox"/> Yes	

7 | PAYMENT INFORMATION

Registration fee US\$ _____

Membership renewal US\$ _____

Total of activities fees US\$ _____

TOTAL AMOUNT DUE US\$ _____

Pre-payment by 10 April 2025 is required. Cash payments on-site will not be accepted.

Charge to Visa MasterCard American Express

Expiration date (mo/yr) ___ / ___ CCV/CVV security code _____

Print name on card _____

Authorized signature _____

Wire transfer in US\$. (Contact info@iaia.org for wire transfer instructions. Registrations will not be processed until full payment has been received.)

8 | SEND REGISTRATION AND PAYMENT

REGISTER ONLINE
2025.iaia.org

BY E-MAIL
info@iaia.org

BY FAX
+1.701.297.7917

BY POST
3212 14th Avenue S, Suite 1
Fargo, ND 58103 USA

QUESTIONS?
info@iaia.org

DON'T MISS THE ONLY INTERNATIONAL, INTERDISCIPLINARY, EDUCATIONAL CONFERENCE DEDICATED TO ADVANCING THE ART AND SCIENCE OF IMPACT ASSESSMENT!

What sets IAIA conferences apart from other conferences? Past IAIA delegates say...

A large diversity of topics and concrete cases on impact assessment.

“

The breadth of expertise and experience it covers and the culture of open sharing across cultures, sectors, countries. It is unique!

“

Strong community spirit and direction to make impact assessment work contribute to effective, inclusive, and meaningful changes we want to have for people and nature.

“

A safe space to present ideas.

Important dates and deadlines

Please note dates are firm.

31 October 2024

- Paper and poster abstract submission deadline

27 November 2024

- Energy Capacity Building Stipend application deadline

8 January 2025

- Rita R. Hamm IA Excellence Scholarship application deadline

22 January 2025

- Early Bird registration rate ends
- Last date presenters and session chairs may register and pay in full to be included in the final program

28 February 2025

- Sponsorship confirmation

11 March 2025

- Technical visits and training courses below minimum will be canceled, so registration by this date is encouraged
- Deadline for exhibitors

10-24 March 2025

- Applications for student training course fee waivers accepted

10 April 2025

- Registration closes

29-30 April 2025

- Pre-conference training courses and technical visits

1-4 May 2025

- IAIA25

5 May 2025

- Post-conference technical visit

