

Overcoming Challenges in Implementing ESIAs: A Case Study From Bolivia



Fiorella Pino Luna

Environmental Coordinator for the Andes Region

The World Bank Group

Bolivia, Chile, Ecuador, Peru

<https://www.worldbank.org>

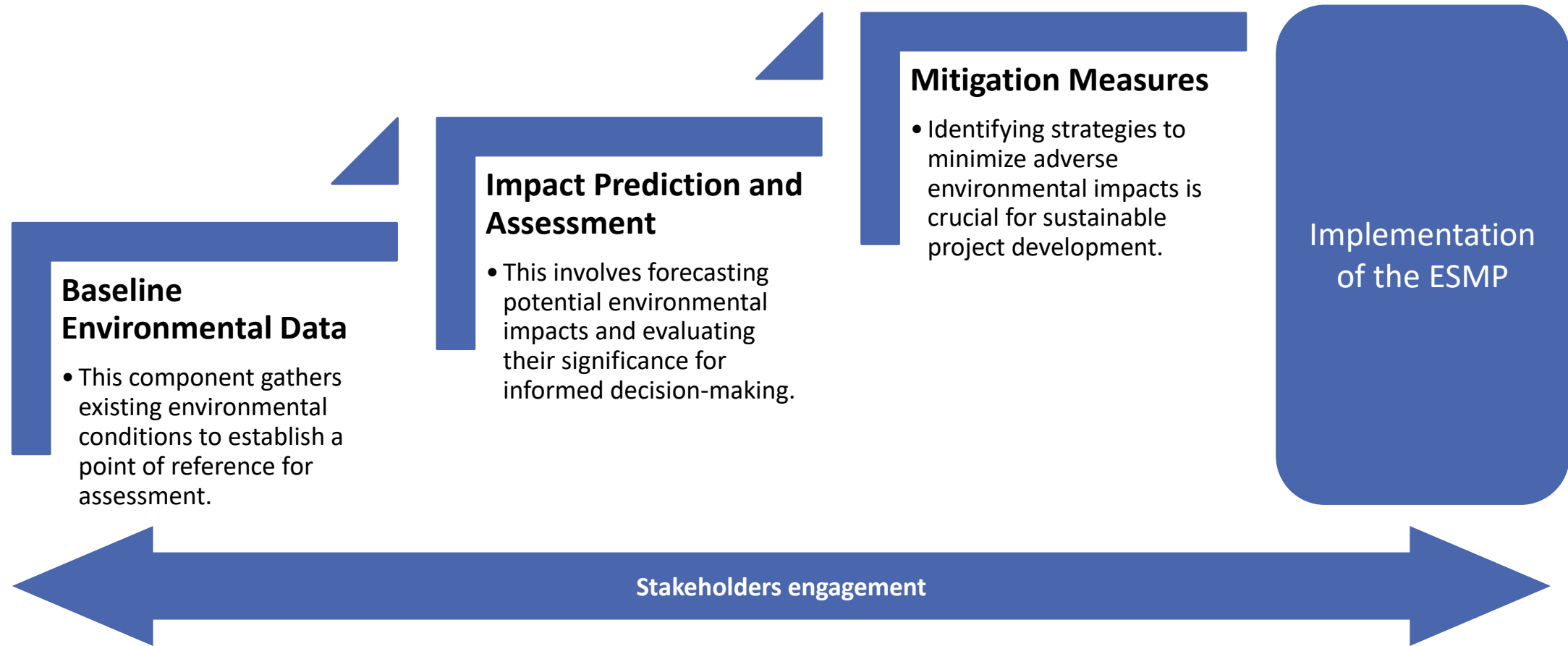




Agenda Items

1. Overview: ESIA and ESMPs
2. Case Study: Road Project in Bolivia
 - Key Socio-Environmental Challenges
 - Challenges implementing ESMPs
 - Corrective Actions
3. Key Takeaways

Typical Components of an ESIA





Challenges in ESMPs Implementation

- Complexity of coordination
- Outdated ESIA - Robust ESMS: Adaptability
- Governance – institutional capacity
- Resources constraints
- Monitoring and compliance
- Community engagement
- Evolving Social and Political Dynamics

Case Study: Road Project in Bolivia

- Chiquitano dry forest
- Improvements and paving of 202 km
- Construction phase: COVID-19
- 4 municipalities
- Indigenous and local communities
- Agribusiness



Borrow Pit Use

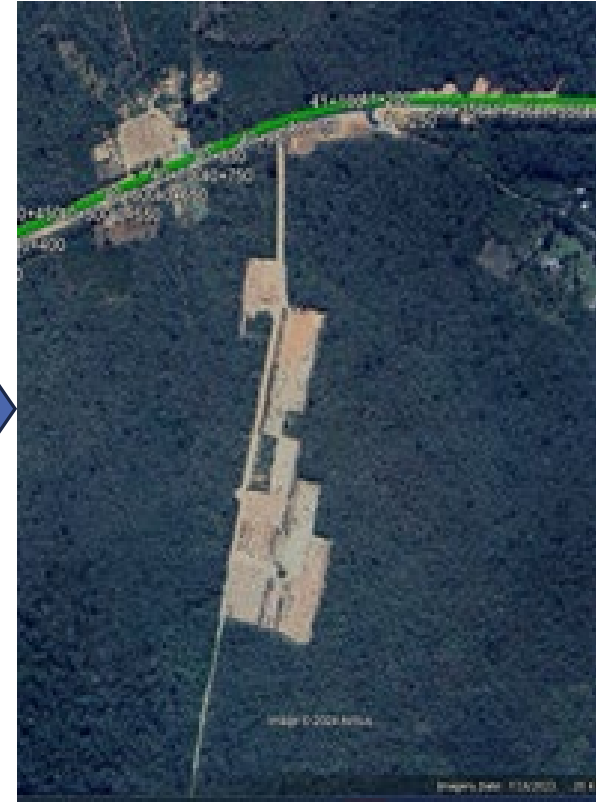


Key Socio-environmental Challenges

- ESIA scope
- Challenges in securing materials
- Local demands: water, land use
- Project Planning



(Google earth, 09/2018)



(Google earth, 09/2023)

Monitoring and Compliance

- Roles and Functions
- Certification process for ESMPs
- Incomplete Assessments: scope of agreements and community engagement
- Grievance Mechanism



Governance & Institutional capacity



Weaknesses in Public Structures

Fragmented Decision Making

Team responsibilities



High Staff Turnover

Loss of Institutional Knowledge

Implementation Challenges



Under-Resourced E&S Teams

Monitoring compliance issues

Not addressing concerns adequately



Contracts

Safeguards requirements Compliance

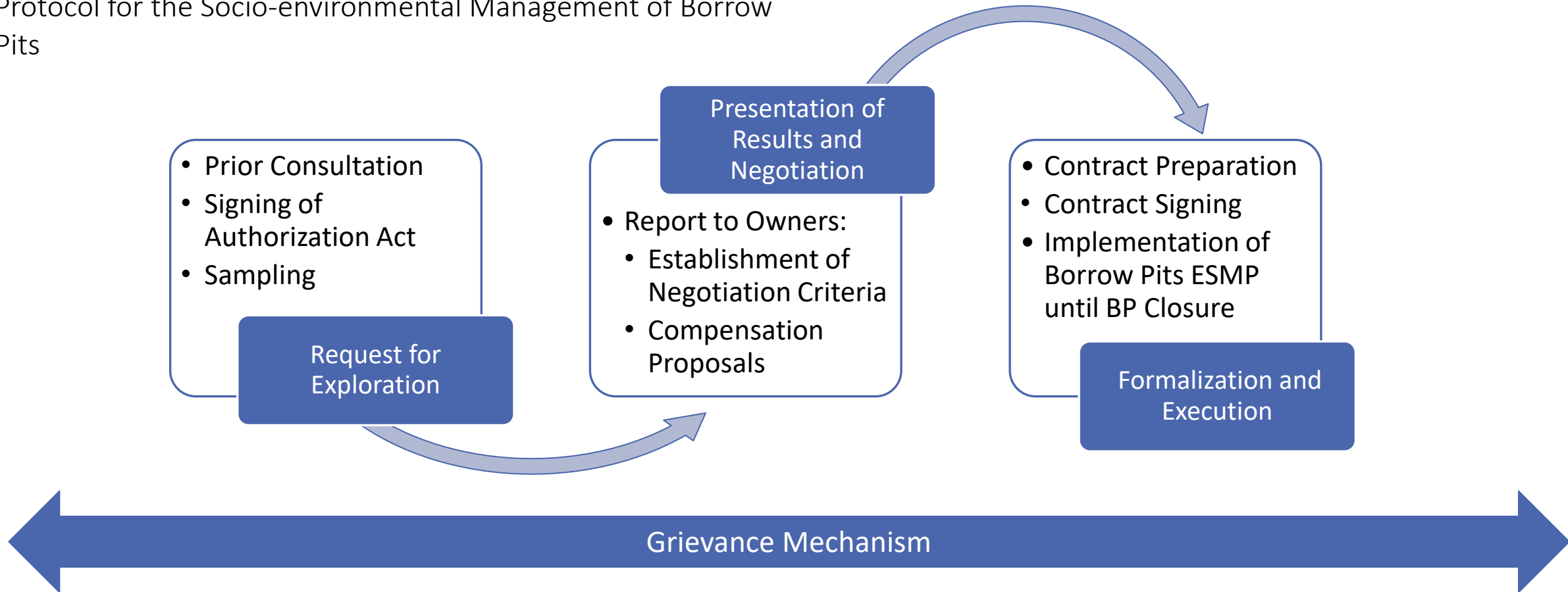
Corrective Actions

- Decision-Maker Involvement
- Prioritizing Environmental and social Factors
- Action Plan at management level
- Deep integration of E&S into project planning and implementation.
- Assignment of human and financial resources
- Documentation: collecting background information, readjusting ESMPs, creating and implementing new Protocols



Corrective Actions

Protocol for the Socio-environmental Management of Borrow Pits





Key takeaways

- ✓ Close follow-up on contractors
- ✓ Authority in Implementation
- ✓ Securing resources
- ✓ Monitoring and compliance
- ✓ Adaptability in ESMPs
- ✓ Early, continuous and meaningful community engagement



Let's continue the conversation!

Message me your questions or comments in the IAIA25 app.

Fiorella Pino Luna

Environmental Coordinator for the Andes Region

The World Bank Group

Bolivia, Chile, Ecuador, Peru

#iaia25

<https://www.worldbank.org>