

Indigenous Cultural Heritage:

... not just another worthy agenda item



Hirini Paerangi Matunga

*Professor of Māori & Indigenous Development
Te Whare Wanaka o Aoraki, Lincoln University
Aotearoa, New Zealand*



ko au te whenua, Ko te whenua ko au
I am the land the land is me

Archaeology



*Wounded Knee reburial ceremony,
Pine Ridge Reservation, South Dakota, USA
11.Sept 1989*

World Archaeological Inter Congress Archaeological Ethics & Treatment of the Dead



*First Code of Ethics : Members Obligations
to Indigenous Peoples (1990)*

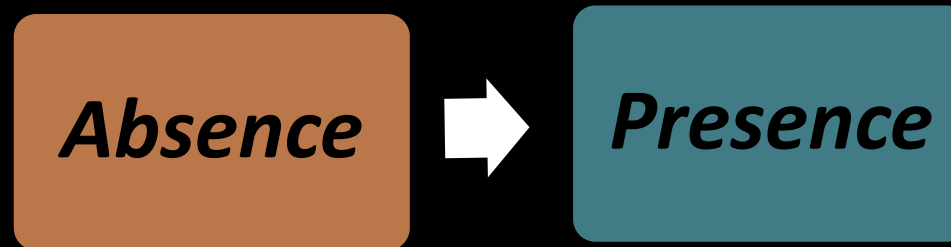
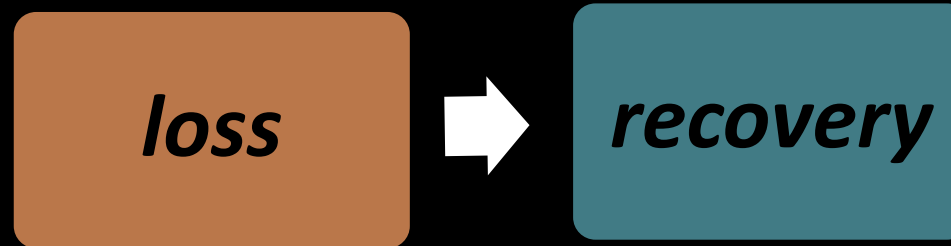


Principles & Rules for archaeology/ists

*(indigenous self definition, survival, wellbeing, ownership,
methodologies, relationships, representation, informed
consent, non-interference , obligations et al.)*

Ethics of recovery & reconnection

(incl restitution, repatriation, redress + many other `re-s)



Impact Assessment



14 February 2023

Cyclone Gabrielle

1 June 2023

Regional Council indicates risk categories

August 2023

District Council asks Petane Marae to surrender
building consents

October 2023

HBRC **confirms** Petane Pa and surrounds as Category 3



*Petane Pa/urupa, Hawkes Bay,
NZ after Cyclone Gabriel (photo Maree Brown)*

I am the land the land is me : severed!

HIRINI MATUNGA IATA25

‘Indigenous’ Cultural Heritage - *UNDRIP, UNESCO et al*

“not just a catalogue of artefacts, monuments, buildings, sites, places, objects, customs, traditions, languages et al ... but whole lands, environments, countries, waters, resources - communities, peoples, & bodies - stolen, removed, misappropriated, threatened through colonial processes”



Indigenous Cultural Heritage : *redefined* ?

“ the tangible and intangible things of value - that link, inextricably - indigenous peoples to their country, their lands, their environments, their waters, their resources ... past, present, future”



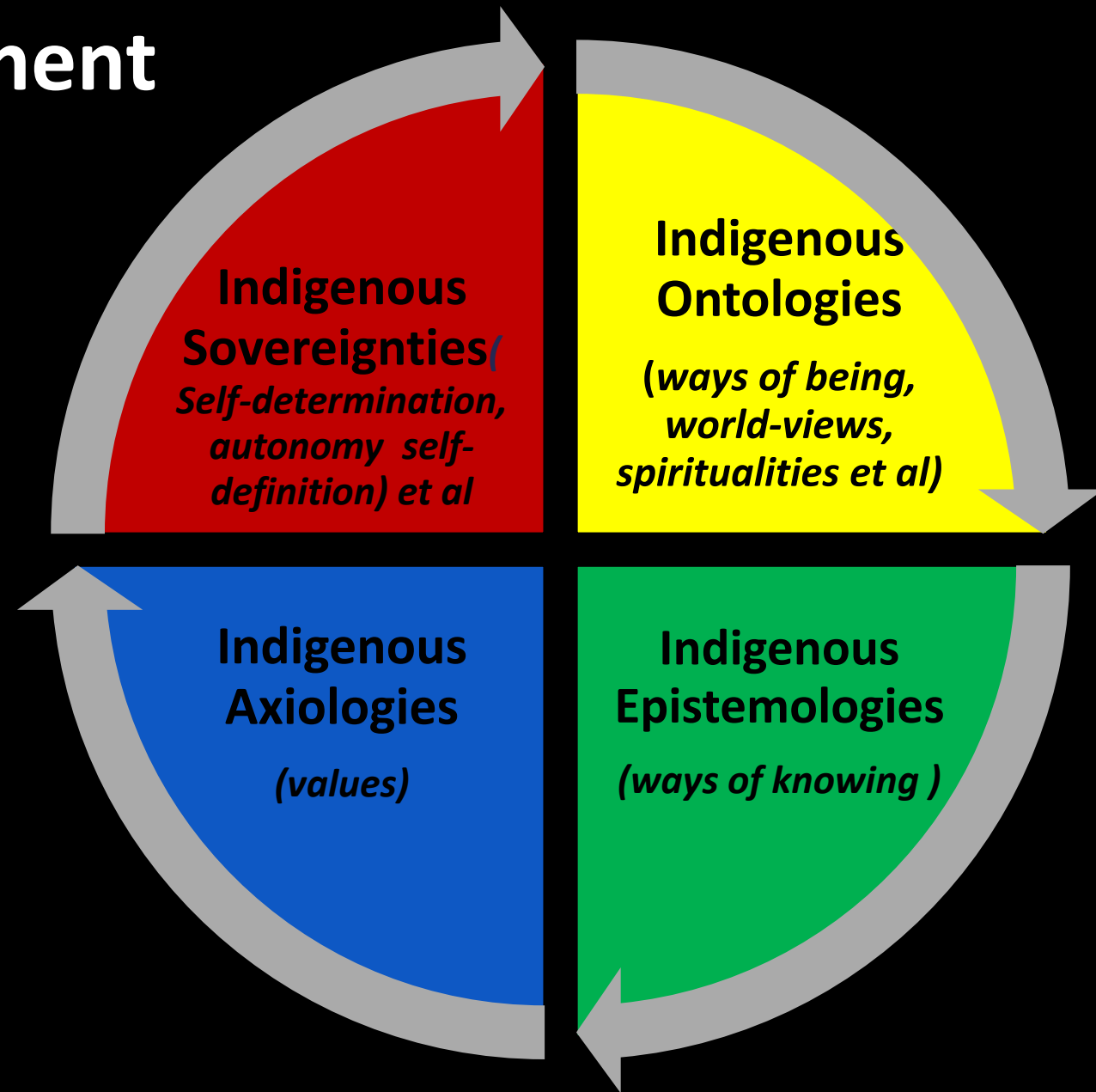
Theory-praxis-ethical Challenge



*To what extent does the discipline, approach or practice (eg IA), facilitate indigenous peoples recovery and reconnection or **enable** ongoing loss and absence?*

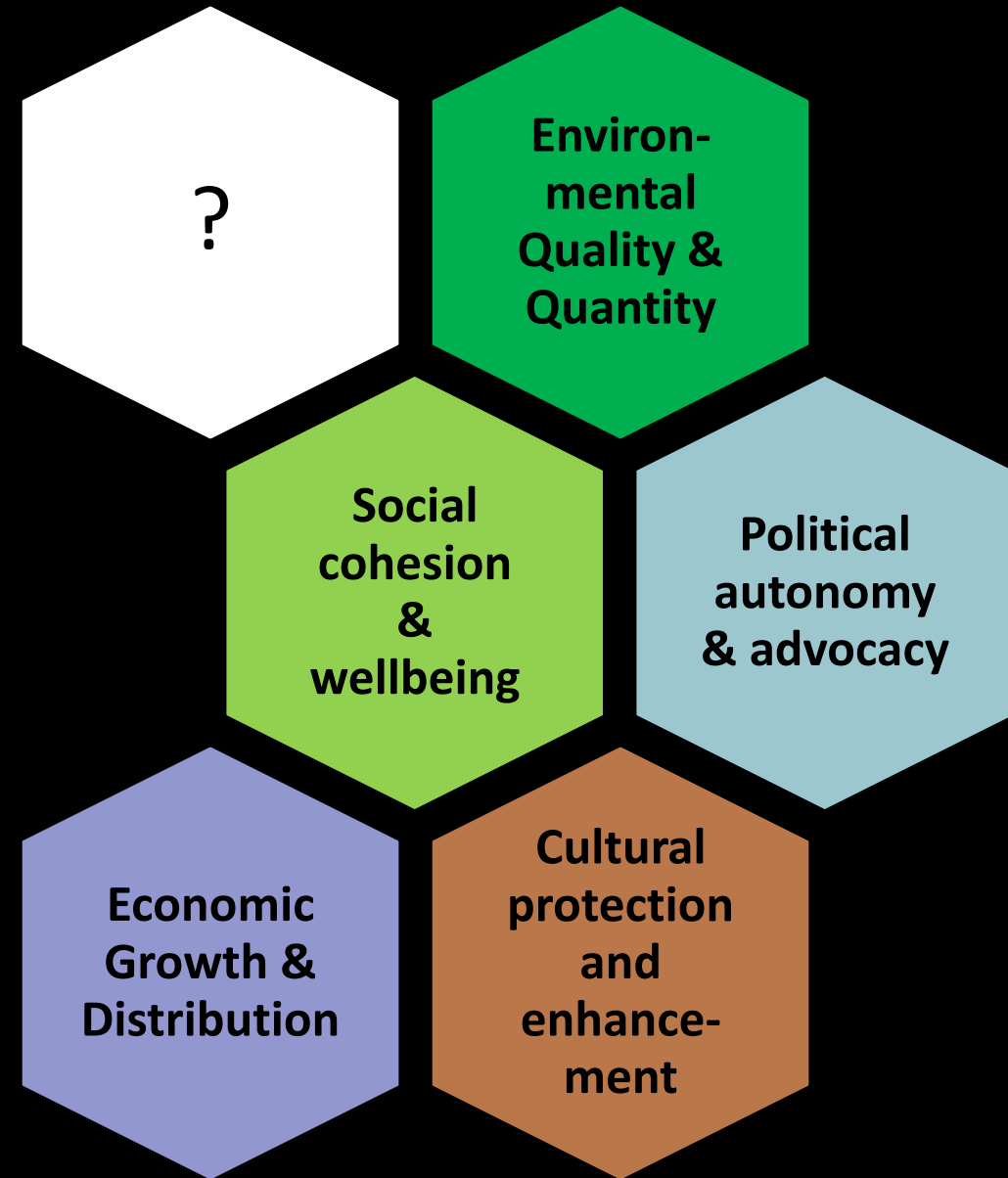
Indigenous Impact Assessment

Impact Assessment
grounded *in*
Indigeneity



Indigenous Impact Assessment

Impact Assessment that
reconciles across of *all*
aspects/dimensions of
Indigeneity
(i.e doesn't cherry pick)



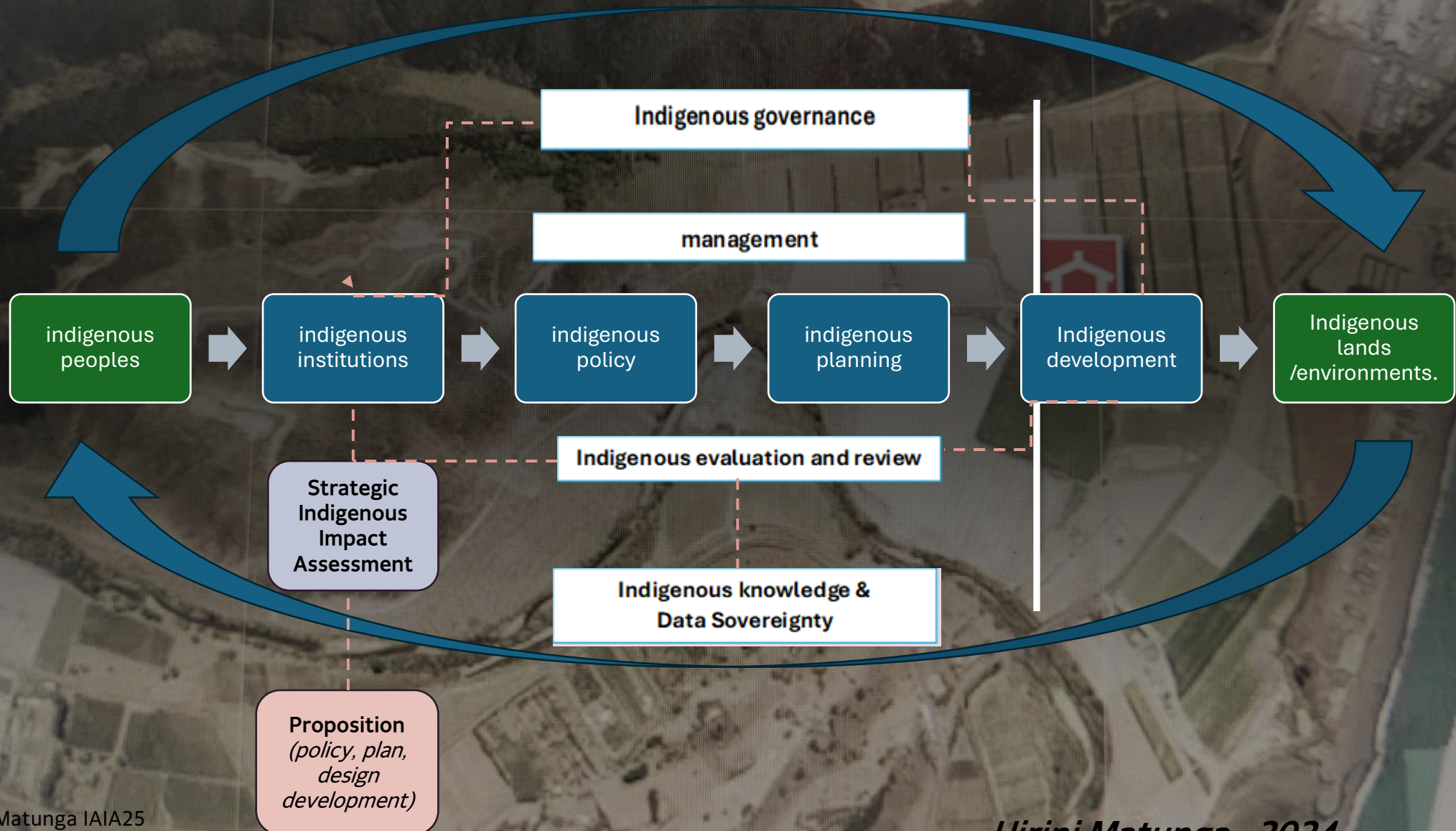
Strategic Indigenous Impact Assessment (SIIA)

*Through SIIA locating IA in the
broader context of indigenous
self determination,
governance & management
- policy, planning
development, data sovereignty
et al.*



Indigenous self determination

(draft, tentative?? policy/planning taxonomy)





AI, a tool for
indigenous
oppression, or
indigenous
emancipation



Let's continue the conversation!

Message me your questions or comments in the IAIA25 app.

Hirini Paerangi Matunga

*Professor , Maori & Indigenous Development, Lincoln University
Aotearoa, New Zealand*

#iaia25